



Australian
National
University

The Public Health Impact of **COVID-19** in Latin America Webinar Series

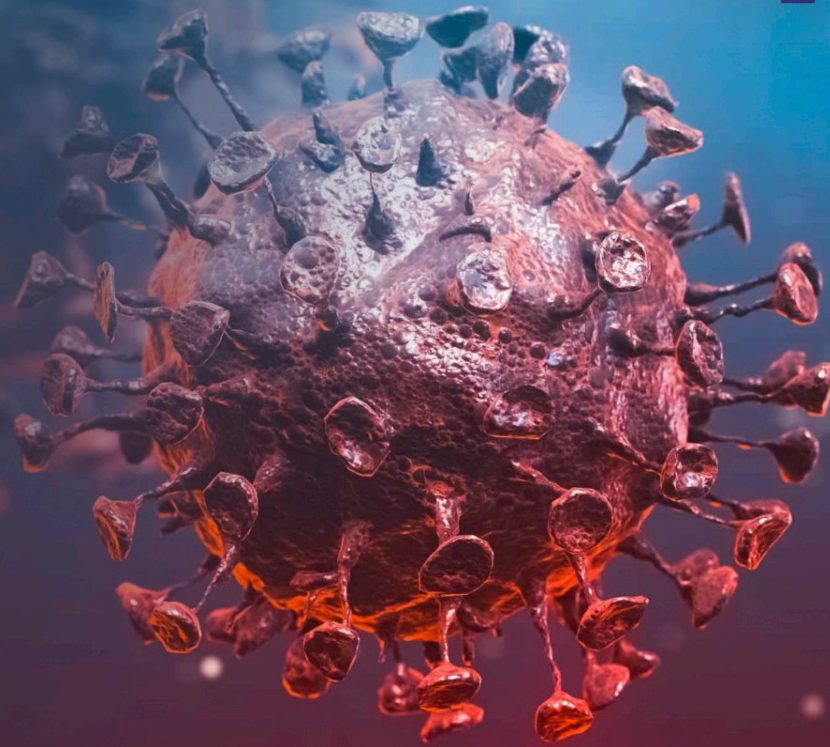
The case of Mexico

Eduardo Lazcano-Ponce

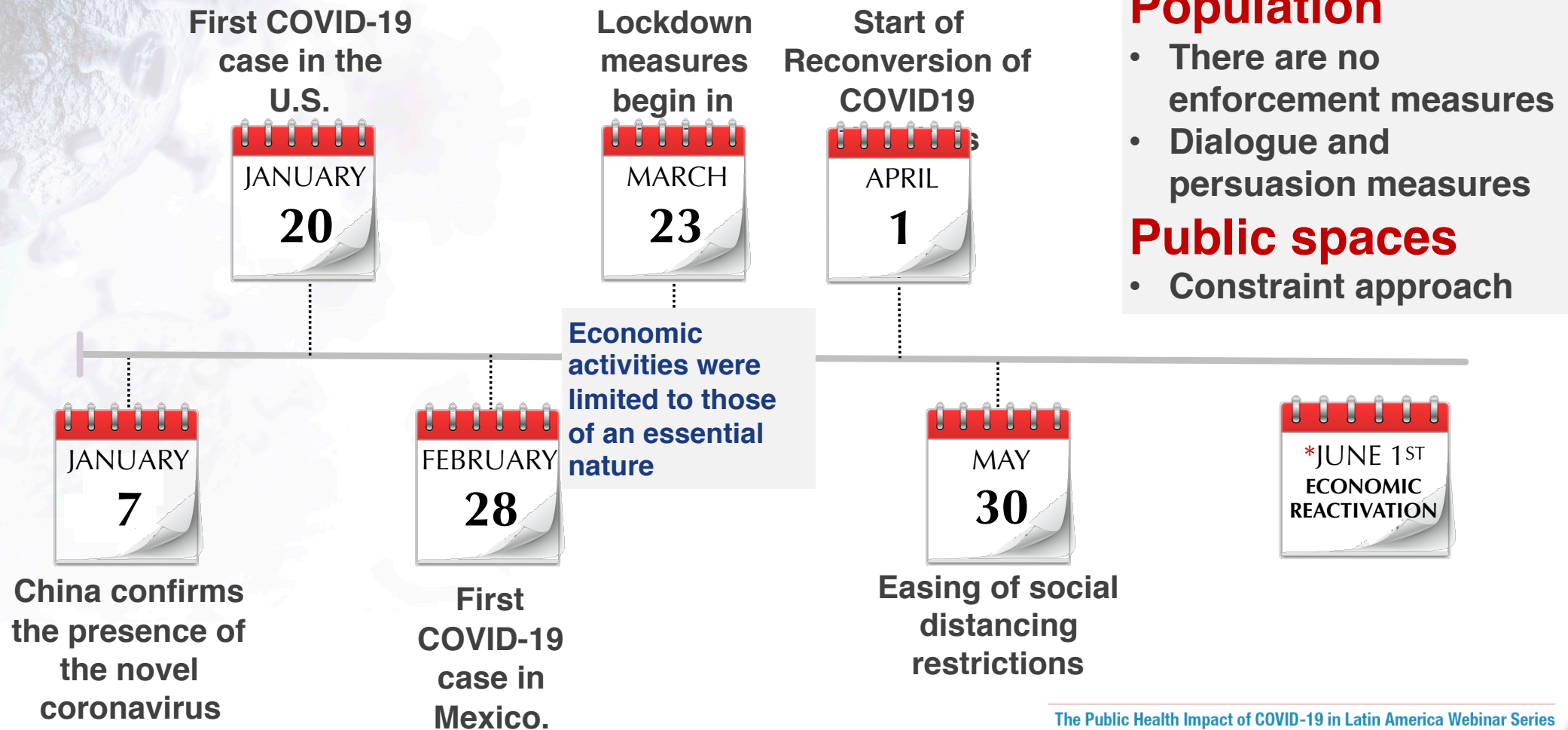
November, 2020



National Institute
for Public health

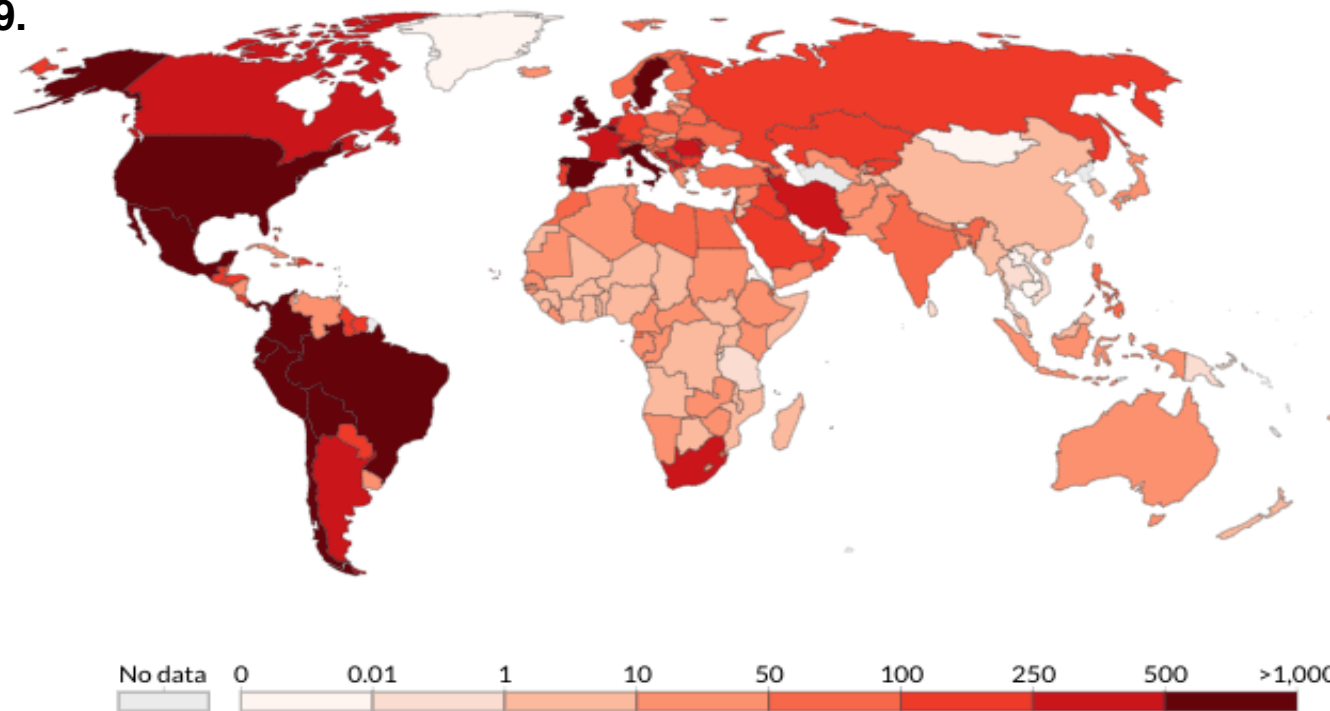


COVID-19 in Mexico



Cumulative confirmed COVID-19 deaths per million people, Oct 4, 2020.

Limited testing and challenges in the attribution of the cause of death means that the number of confirmed deaths may not be an accurate count of the true number of deaths from COVID-19.



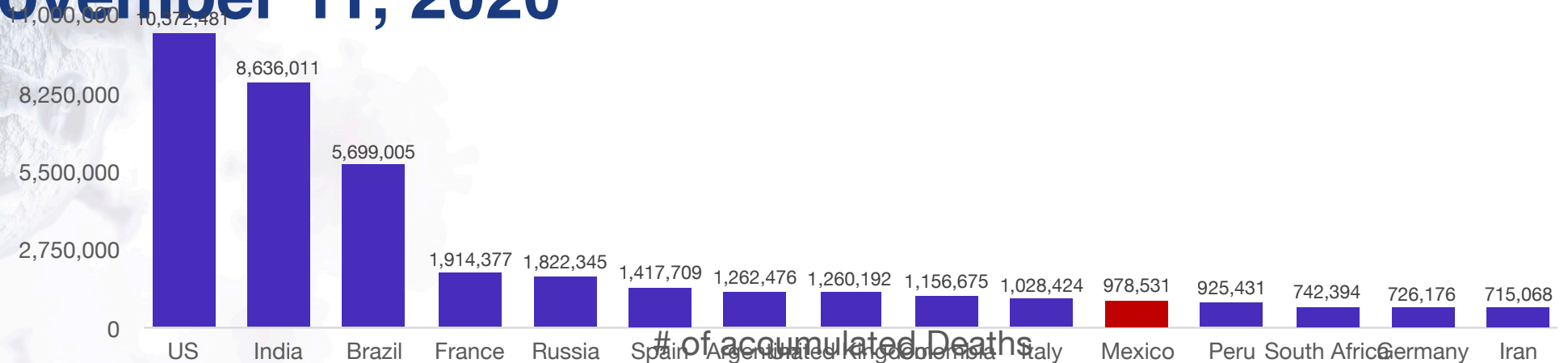
Source: European CDC – Situation Update Worldwide – Last updated 4 October, 10:35 (London time)

CC BY

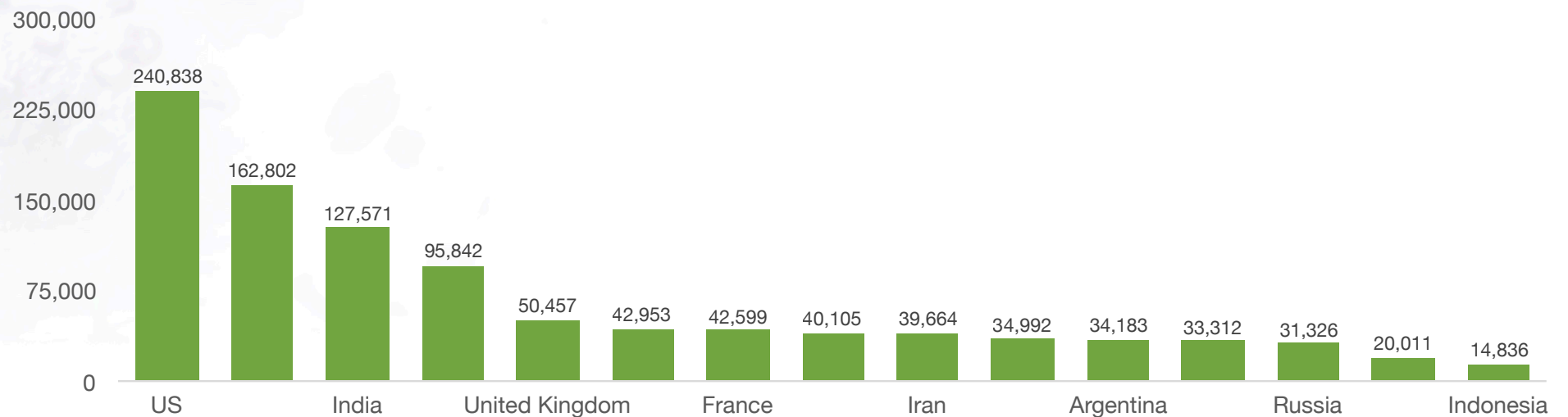
► Dec 31, 2019 ○ Oct 4, 2020

Burden of Covid19 Disease at global level, November 11, 2020

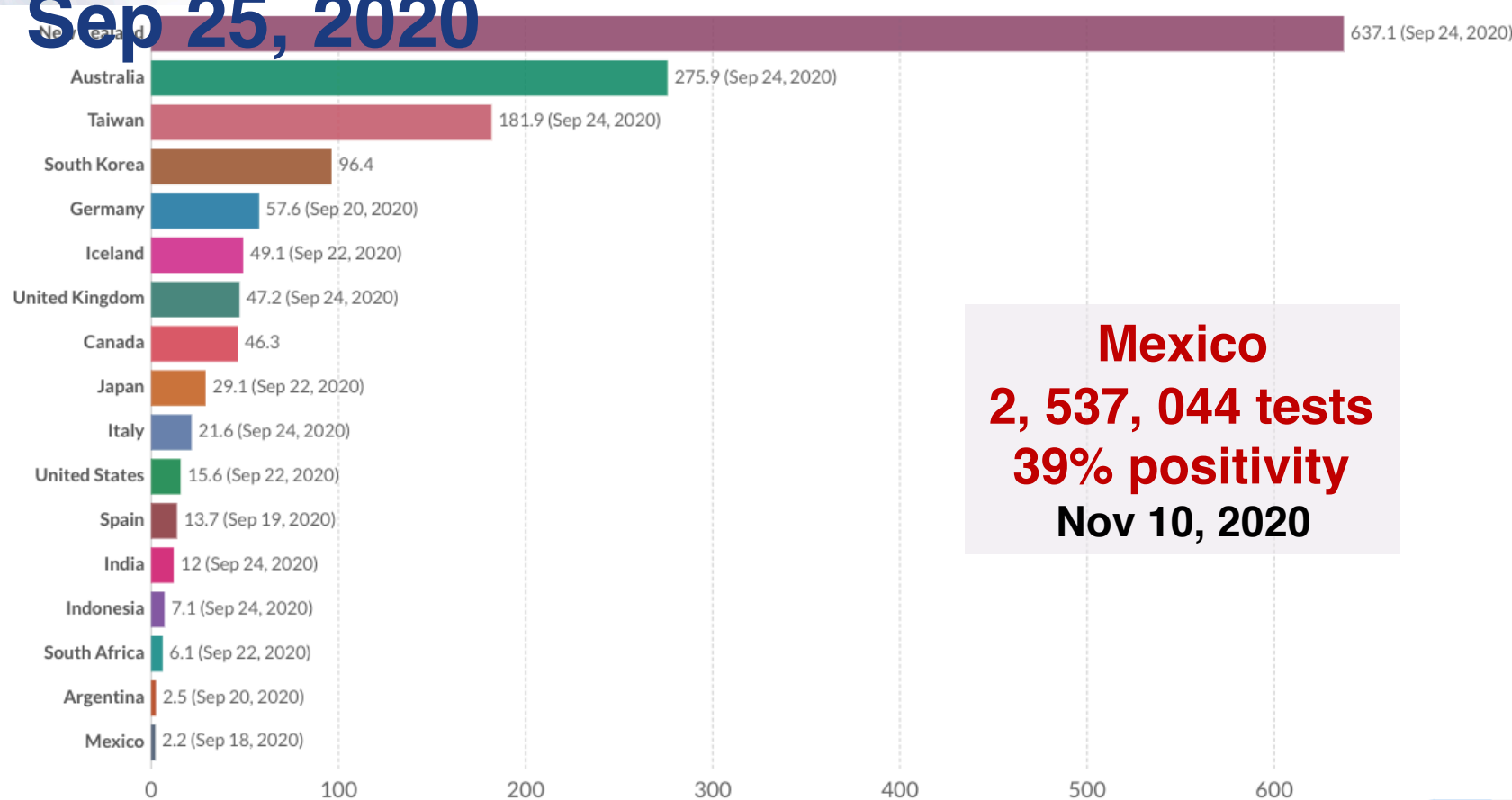
of accumulated cases



of accumulated Deaths



Total number of COVID-19 tests per confirmed case, Sep 25, 2020



Source: Official data collated by Our World in Data; European CDC - Situation Update Worldwide

Note: Comparisons of testing data across countries are affected by differences in the way the data are reported. Details can be found at our Testing Dataset page.

OurWorldInData.org/coronavirus • CC BY

Jan 21, 2020 Sep 25, 2020

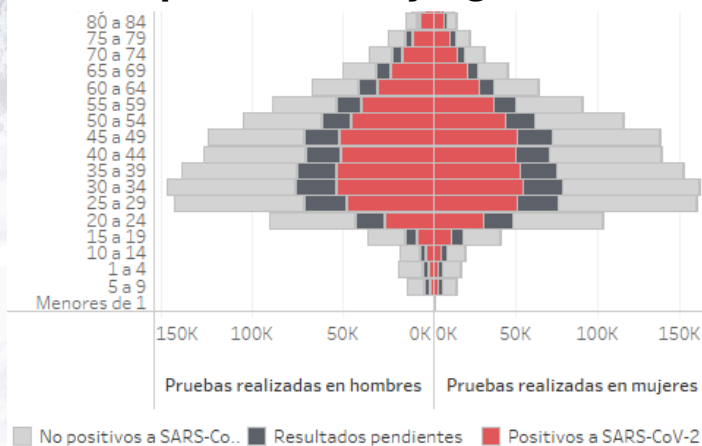
The Public Health Impact of COVID-19 in Latin America Webinar Series

The case of Mexico

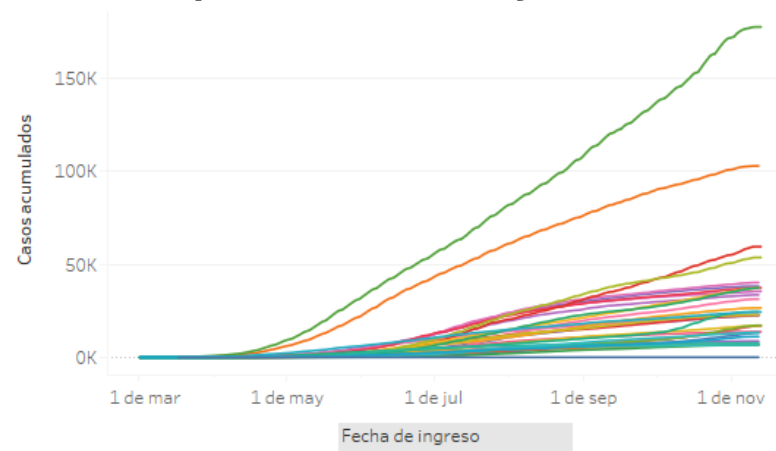
Analytical dashboard until November 13, 2020



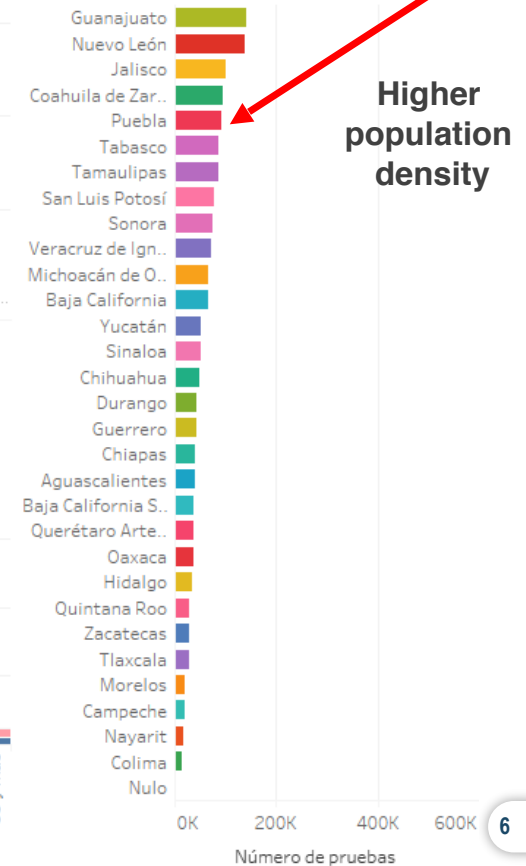
Tests performed by age and sex



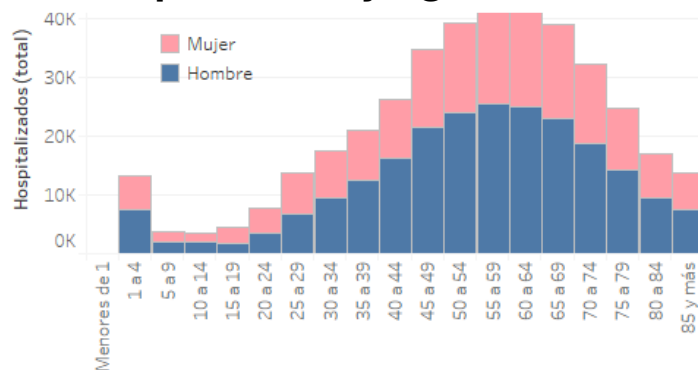
Epidemic curve by state



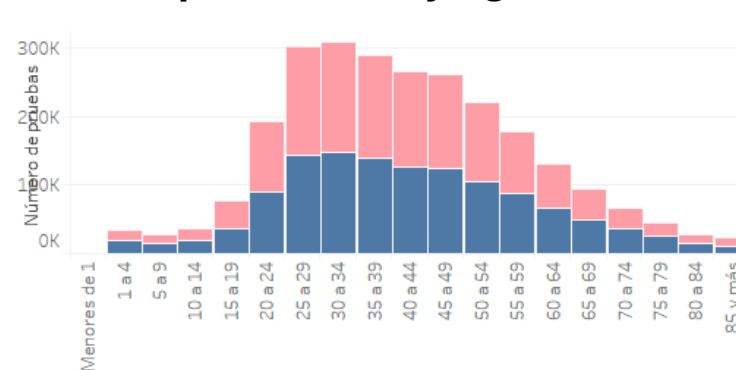
Number of tests per state



Hospitalized by age and sex

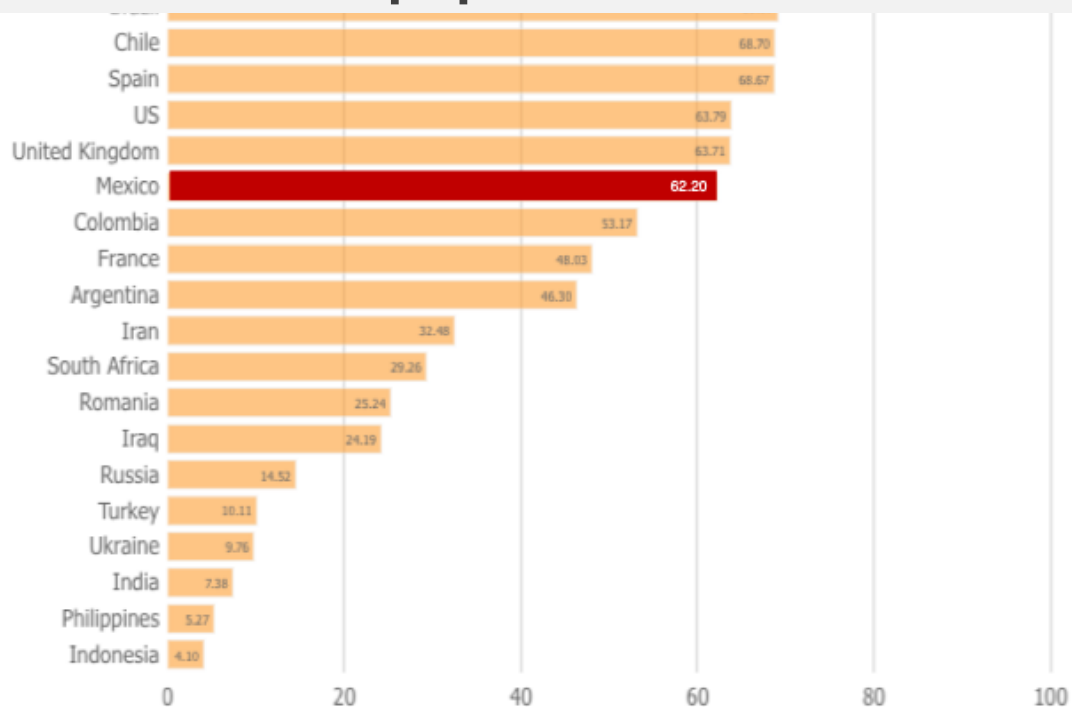


Tests performed by age and sex

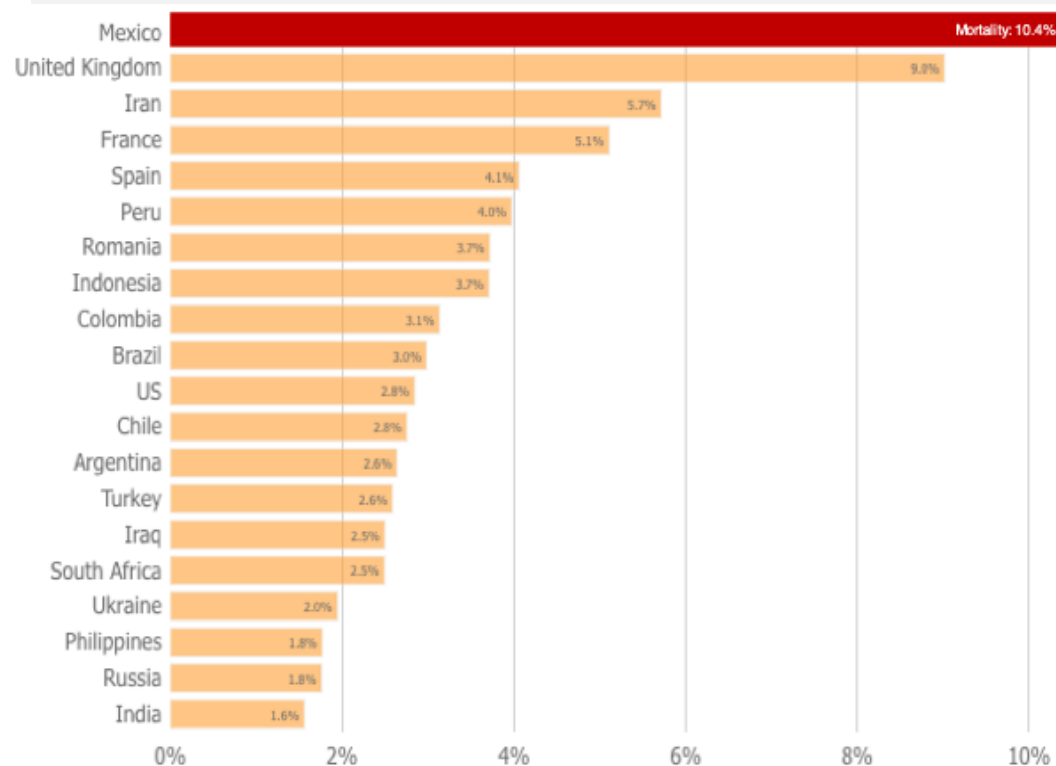


COVID19: Mortality by country

Mortality: Deaths per 100,000 population



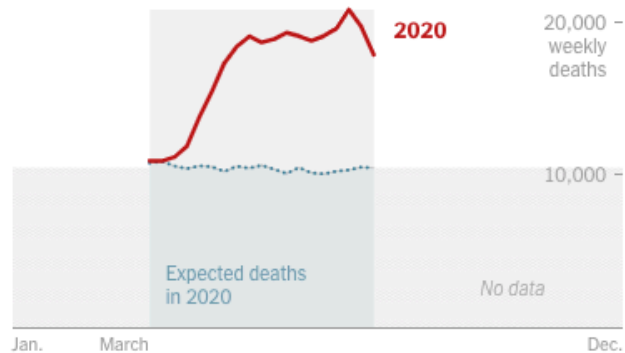
Mortality: Observed case-fatality ratio



>500,000 missing deaths: True toll of excess mortality

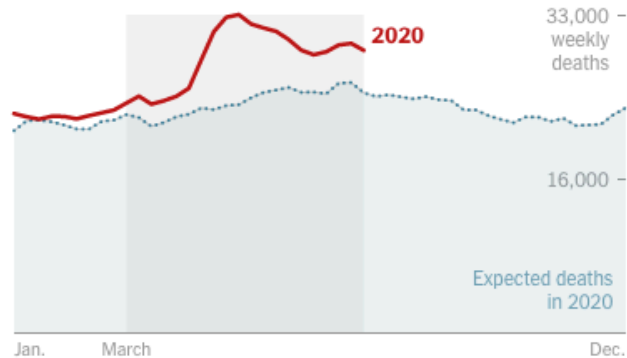
Mexico

122,100+ excess deaths from March 16 to Aug. 2



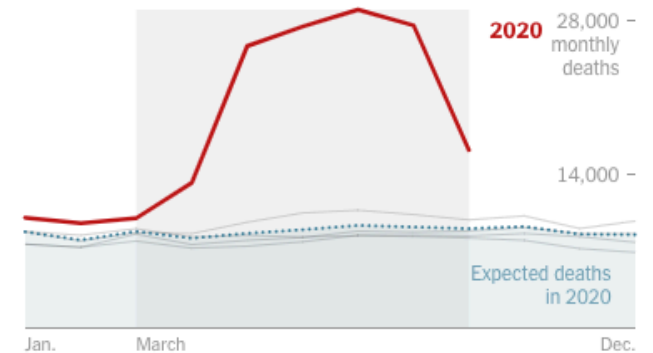
Brazil

95,900+ excess deaths from March 1 to July 25



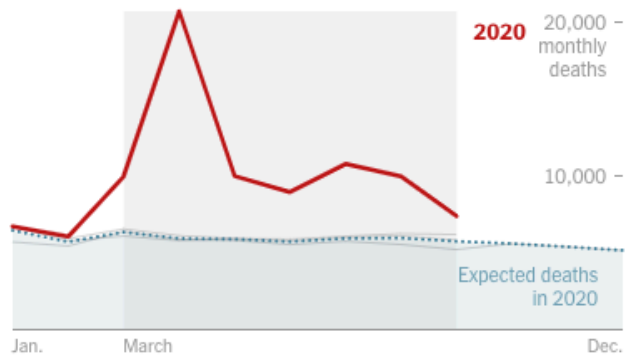
Peru

86,700+ excess deaths from March to September



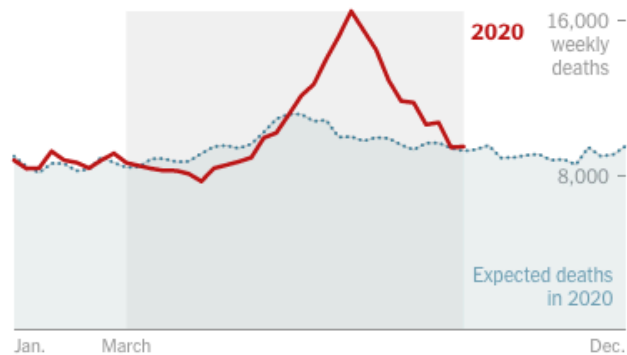
Ecuador

36,200+ excess deaths from March to September



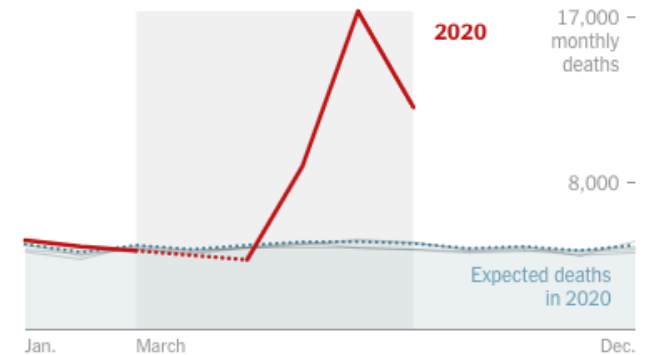
South Africa

30,500+ excess deaths from March 4 to Sept. 16

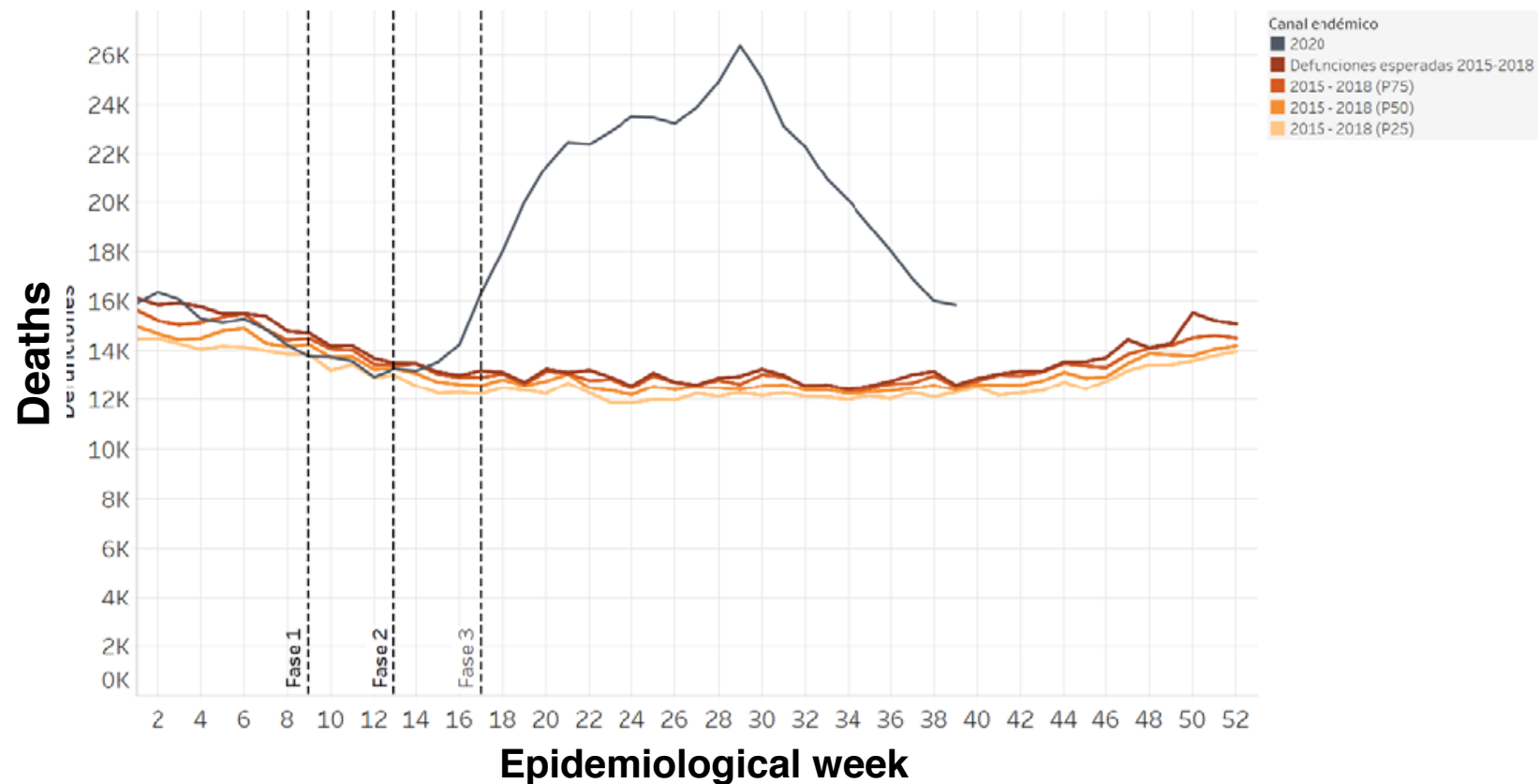


Bolivia

22,900+ excess deaths from March to August

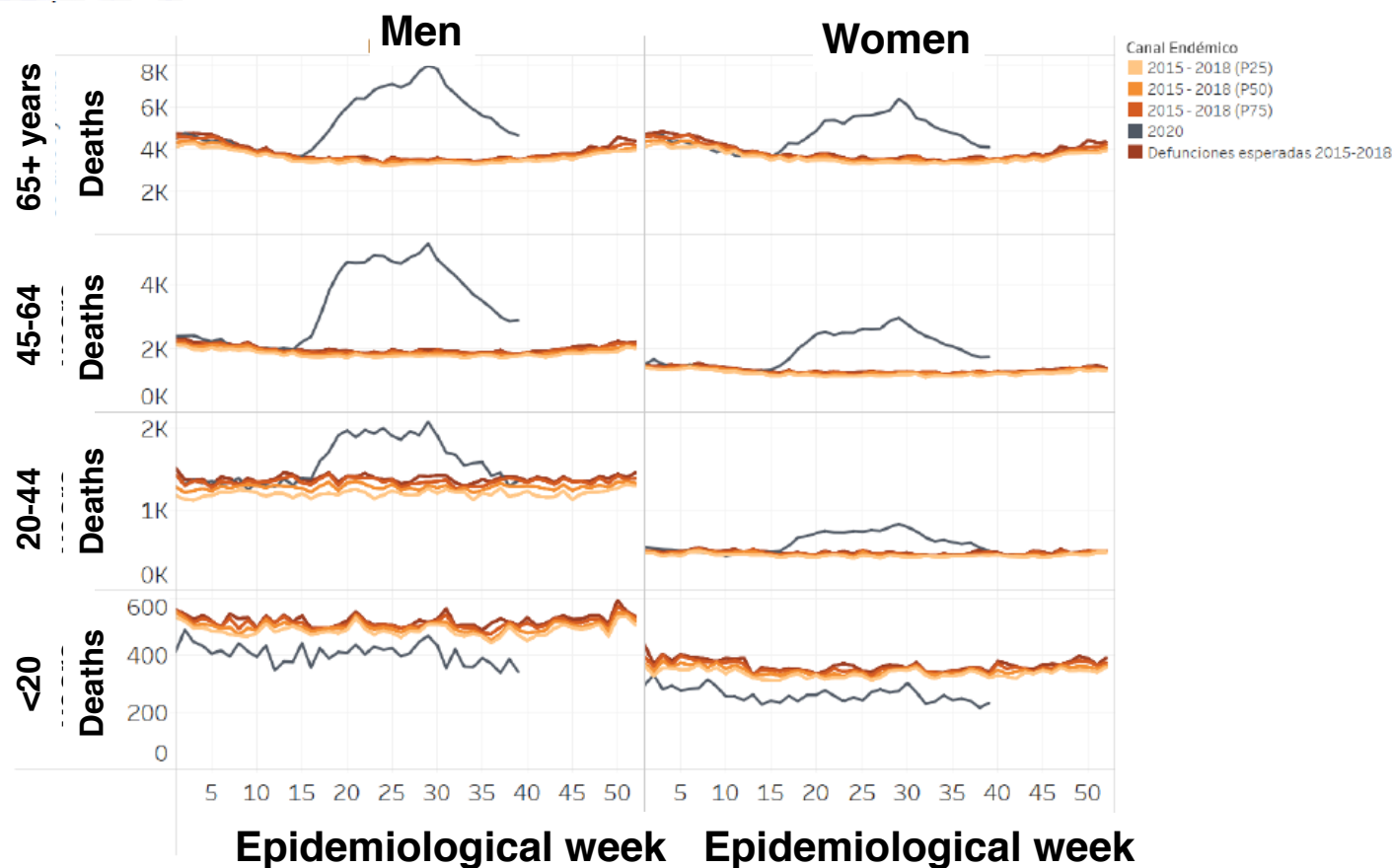


Excess mortality from all causes, Mexico 2020



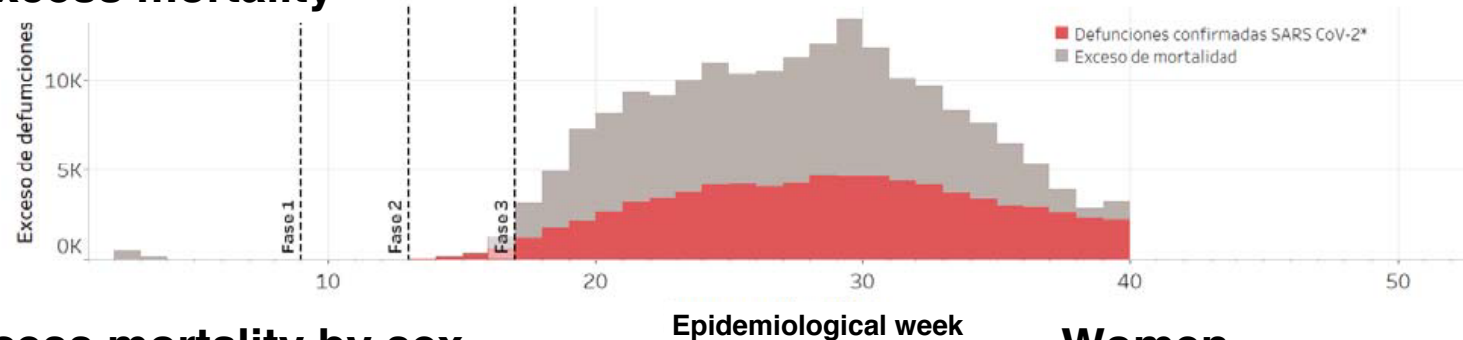
Fuente: Secretaría de Salud. Canal endémico calculado con las defunciones por semana epidemiológica de ocurrencia y entidad de registro, 2015 a 2018, INEGI y el exceso de mortalidad estimado con las actas de defunción por semana epidemiológica de ocurrencia y entidad de registro, 2020, Renapo

Excess mortality from all causes by age groups and sex, Mexico 2020

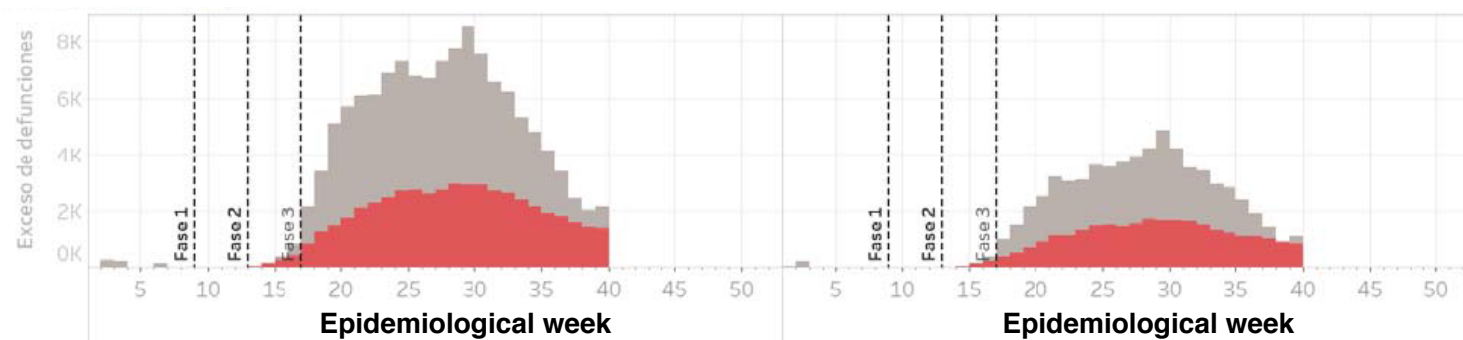


Excess mortality for COVID-19 by sex, Mexico 2020

Excess mortality



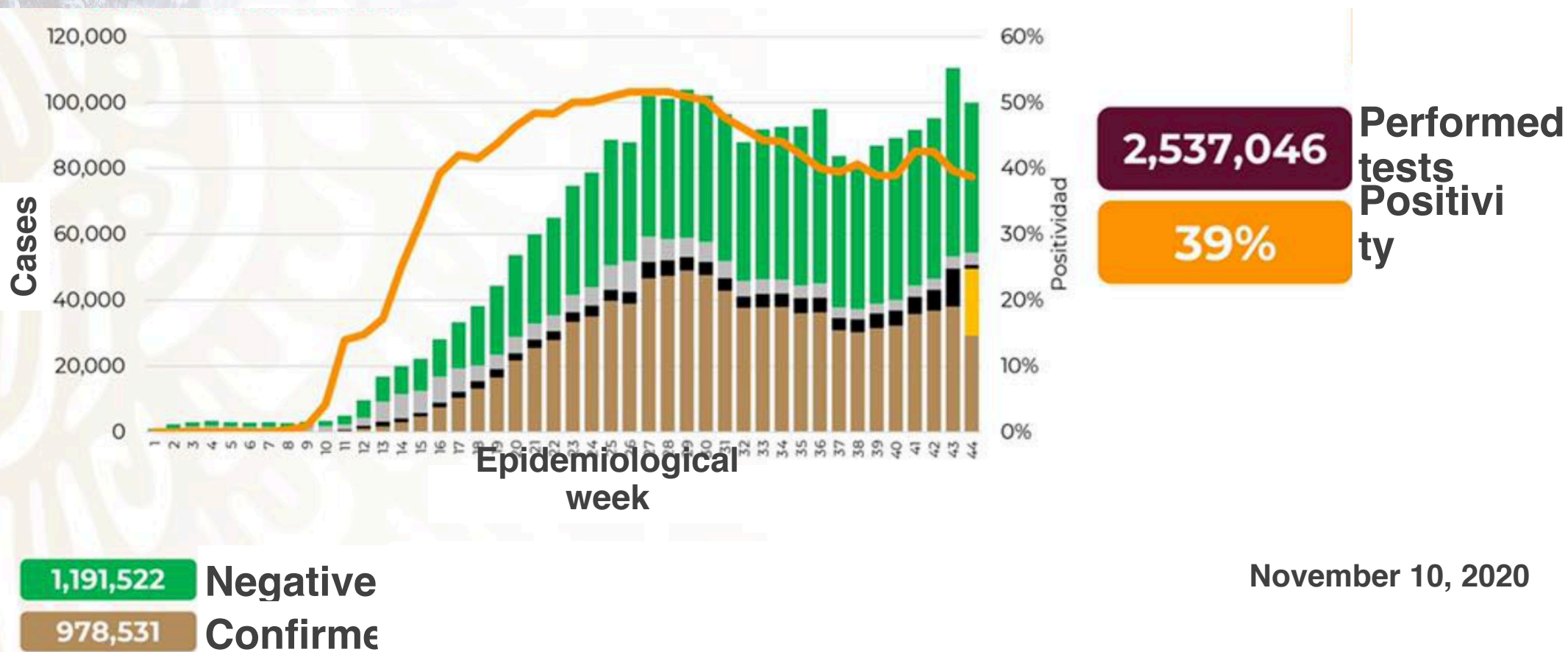
Excess mortality by sex



Fuente: el exceso total de mortalidad fue calculado con las actas de defunción por año de ocurrencia y sexo de 2020 e incluyen las defunciones por COVID-19, y las defunciones Covid19 en color rojo son los registros de defunciones en el SISVER reportados a la Semana 1 a 39.

Covid-19 Mexico: Positive, Suspicious and Negative Cases

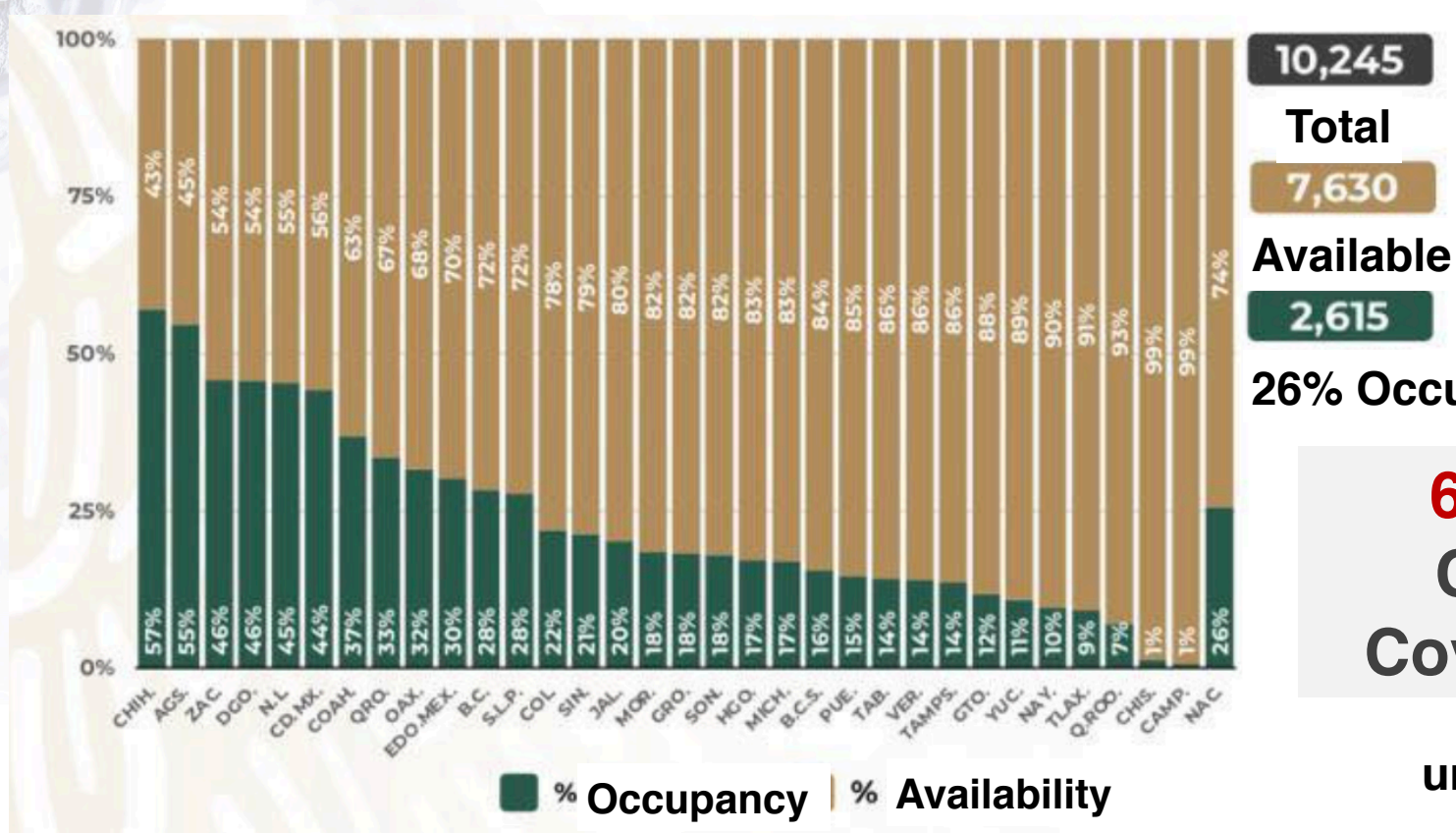
National stage



November 10, 2020

COVID19 Mexico

Availability of hospital beds with mechanical ventilation



610 hospitals
Converted to
Covid19 attention

until November 7, 2020

Reopening after lockdown

Following a nation-wide, 70-day lockdown, Mexico eased restrictions through a gradual strategy named “New Normality” (*Nueva Normalidad*).

Four-color, bi-weekly traffic light that determines industry activity linked to transmission rates:

- **MAXIMUM HEALTH ALERT**
- **HIGH**
- **INTERMEDIATE**
- **LOW**

Color is determined by:

- ✓ Level of health risk (hospital occupation and rate of change)
- ✓ Transmission rate (increase in the number of cases and % sero-positivity rate)

Mexico risk map for COVID19 based on the traffic light



November 11, 2020

Conclusions

✓ COVID-19 has exposed:

- The lack of preparedness: limited stockpiling
- Mexican healthcare system weakness: segmentation and fragmentation
- The 'new normal' may not be working for a majority of our society, for example for informal workers whose minimum income needed for subsistence is obtained on a day-to-day income.
- Social distancing and personal protective equipment remains the remit of those with the means to comply.

✓ What are some lessons learned?

✓ Stress test for health systems

- Find, test, trace, isolate, support
- Invest in surveillance and public health

✓ *“Covid19 is already out of fashion, the important thing is to eat”
a person in public transport*