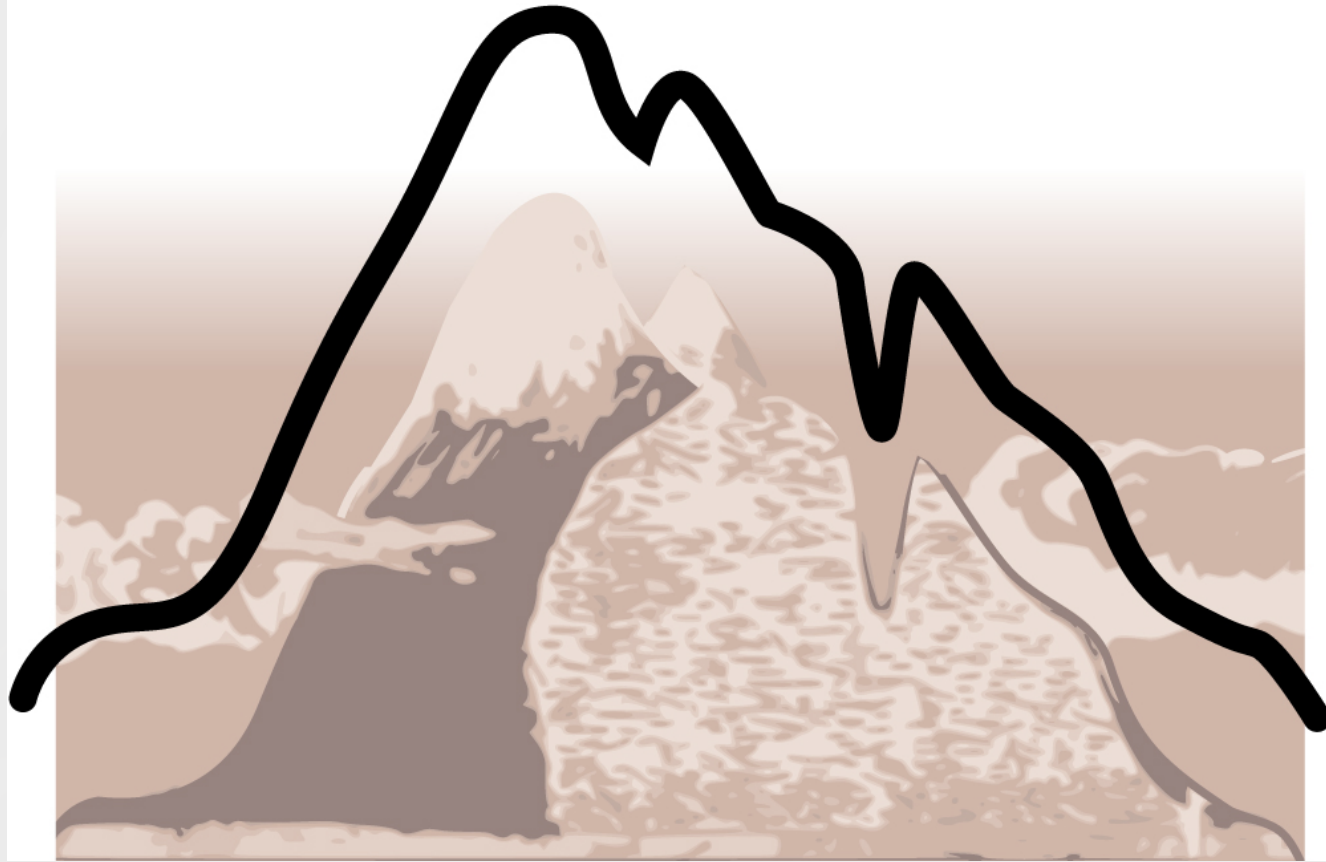


Australian National Centre  
for Latin American Studies

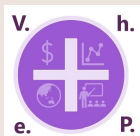
and the

Centre for Mental Health  
Research

present:



A five-part webinar series November – December 2020



# Acknowledgement of Country

Noel Campbell

Australian National Centre for Latin American Studies

Welcome

# The impact of COVID-19 on Mental Health in Latin America

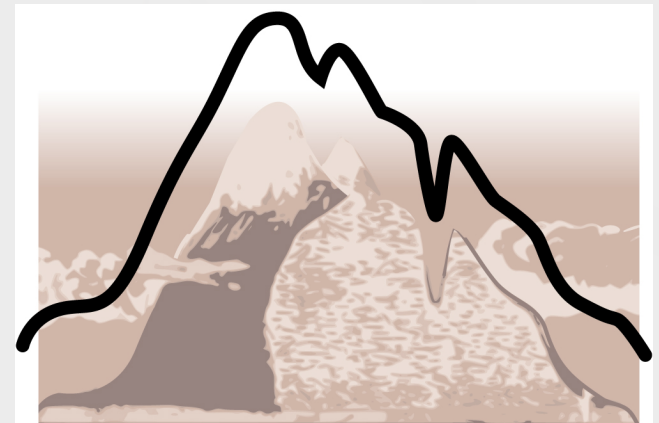
Australian National Centre for Latin American Studies

and the

Centre for Mental Health Research

in collaboration with

University of Newcastle, University of Notre Dame,  
Sydney University Research Community for Latin America &  
University of NSW



# Important

All webinars in the series will be **recorded** & made available publicly & freely.

Your display name and any questions you ask may be included in the recording.

Post event access to the recordings will be via the ANU CMHR webpage <https://rsph.anu.edu.au/cmhr>



# Zoom Housekeeping and Q&A



Your **microphone** will be **muted** for the duration of the webinar; unless you are invited to speak.



## Q&A session

Please use **Chat** to write your questions during the webinar and select **enable all participants** so everyone will see your question.

The hosts/panellists will ask your question on your behalf.

If there are questions on the same topic or theme, then questions may be combined, and not necessarily asked in the order received.

## Contact us

If you need to contact the organisers/panellists – please use **Chat** facility in **Zoom** to send a **private** message.

Follow us

@CMHR\_ANU

@ANCLAS2

@ValueHealthEcon



# Characteristics of health systems

## Similarities

- First cases occurred March 2020
- Declaration of national health emergency
- Mitigation and containment measures
- Agreed triggers for lifting measures

# Characteristics of health systems

## Differences

- Political systems
- Health spending as percentage of GDP
- Population: Mexico (126 million); Cuba (11.3 million); Costa Rica (5 million)
- Mix of public and private coverage

**There can be no one-cap-fits-all approach to dealing with COVID-19**

# COVID19 - Situations in-country

## Variation in case numbers and deaths

- Mexico has 1.05 million cases (10% of total Latin America caseload), 102,000 deaths
- Low testing rate means statistics for Mexico are probably underestimates
- Costa Rica 133,000 cases and 1662 deaths
- Cuba 7879 cases and 132 deaths

# **Policy approaches to COVID**

## **Mexican leadership**

- played down the pandemic

## **Costa Rica and Cuba (and state and local governments in Mexico)**

- Acknowledged the reality of COVID
- Intervened with mitigate measures
- Border closures, increased testing, quarantines



# What worked well ?

## **Some policies worked better than others**

- Increased funding for health sector
- Cuba's strong centrally planned public health sector an advantage
- eg. Rapid roll-roll-suit of testing, surveillance and contract tracing
- Scientific Advisory bodies provided evidence-based recommendations to government

# What should be improved ?

## Some obvious shortcomings

- Poor alignment of economic and health measures
- Mitigation measures relaxed too early
- Unequal access to information technology
- Lack of track and trace capability
- Inconsistent messaging



# **Main socio-economic impacts**

## **Intervention measures also resulted in:**

- Severe economic contraction
- Further weakening of fragile economies
- Rise in unemployment
- Rise in poverty rates
- Deterioration of mental health

# Lessons for the future

## **Speakers underlined the need to:**

- Develop integrated national COVID policy
- Act early, swiftly and decisively
- Invest in medical research and technology
- Care for and protect health workers
- Ensure clear and consistent messaging
- Establish framework to manage distribution of a vaccine

# Luis Salvador-Carulla

Luis Salvador-Carulla is Head of the Centre for Mental Health Research at the Research School of Population Health, Australian National University. He has been an advisor to the Government of Catalonia (Spain), the Spanish Ministry of Health, the European Commission (EC) and the World Health Organisation (WHO).



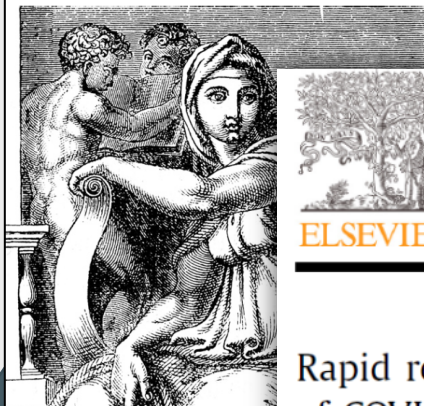
# The impact of COVID-19 on mental health in Denmark

Thursday 9 April 2020

5.00pm Brisbane, Canberra, Sydney, Melbourne

Presenter:

Dr Mikkel Rasmussen



ELSEVIER

Contents lists available at [ScienceDirect](https://www.sciencedirect.com)

## Health Policy and Technology

journal homepage: [www.elsevier.com/locate/hlpt](http://www.elsevier.com/locate/hlpt)



### Rapid response to crisis: Health system lessons from the active period of COVID-19

Luis Salvador-Carulla<sup>a</sup>, Sebastian Rosenberg<sup>a,b</sup>, John Mendoza<sup>c,d</sup>,  
Hossein Tabatabaei-Jafari<sup>a,\*</sup>, Pandemic-Mental Health International Network<sup>1</sup>



ELSEVIER

Contents lists available at [ScienceDirect](https://www.sciencedirect.com)

## Health Policy and Technology

journal homepage: [www.elsevier.com/locate/hlpt](http://www.elsevier.com/locate/hlpt)



### International experiences of the active period of COVID-19 - Mental health care

Sebastian Rosenberg<sup>a,b</sup>, John Mendoza<sup>c,d</sup>, Hossein Tabatabaei-Jafari<sup>e,\*</sup>, The  
Pandemic-Mental Health International Network (Pan-MHIN)<sup>a</sup>, Luis Salvador-Carulla<sup>f</sup>



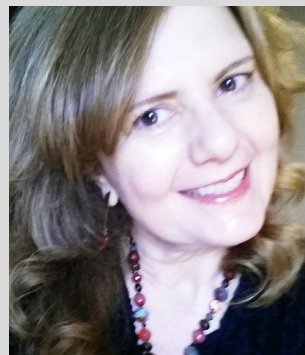
# The impact of COVID-19 on Mental Health in Latin America



Matias  
Irarrazaval



Maria Elena  
Medina Mora



Denise  
Razzouk

Q & A  
Moderator



Luis  
Salvador-Carulla



Noel  
Campbell

## PROGRAM

9.00 am Introduction & Housekeeping – Noel Campbell

9.07 am Introduction to the event – Luis Salvador-Carulla

9.15 am The impact of COVID-19 on Mental Health in Latin America

*with Matias Irarrazaval (Chile), Maria Elena Medina Mora (Mexico), Denise Razzouk (Brazil)*

10.00 am Q&A with speakers and hosts – Moderated by Luis Salvador-Carulla

10.27 am Closing comments – Noel Campbell

# Matias Irarrazaval



**Matias Irarrazaval** is Director of Mental Health, Ministry of Health of Chile. He also works for the Ministry of Health as a child and adolescent psychiatrist. Matias has several research projects which aim to implement prevention programmes and establish sustainable scaling of public health systems to improve access to mental health treatment in Chile and the Americas.

# Maria Elena Medina Mora



**Maria Elena Medina Mora** is founder of the Center for Global Mental Health Research, National Institute of Psychiatry, Mexico, and was recently appointed as Director, Faculty of Psychology National Autonomous University of Mexico. She is former Director-General Director of the Mexican National Institute of Psychiatry, and a member of WHO Advisory Groups on mental health and substance use disorders.

# Denise Razzouk



**Denise Razzouk** is a psychiatrist with a Master of Science and PhD in health sciences from the Department of Psychiatry, Universidade Federal de São Paulo (Unifesp), Brazil, an MBA in Health Management from Fundação Getúlio Vargas (FGV) and post-doctorate in health economics, King's College, London.



# Q & A



Please use **Chat** to write your questions during the webinar and select **enable all participants** so everyone will see your question.

The hosts/panellists will ask your question on your behalf.

If there are questions on the same topic or theme, then questions may be combined, and not necessarily asked in the order received.

## Contact us

If you need to contact the organisers/panellists – please use **Chat** facility in **Zoom** to send a **private** message.

# Next event

Australian National Centre  
for Latin American Studies

and the

Centre for Mental Health  
Research

present:

## Webinar 5: **(MESA REDONDA en español)**

**El impacto de la COVID-19 en la salud publica de los  
países de Latino America. Experiencias y  
aprendizajes.**

[The public health impact of COVID-19  
in Latin America: *Roundtable - Lessons learnt* ]

**9.00-10.30am AEDT Thurs 3 Dec 2020  
Canberra**

**7.00-8.30pm Wed 2 Dec 2020  
São Paulo**

A five-part webinar series November – December 2020

# Thanks to our supporters

- Embassies of Brazil, Chile, Costa Rica, Cuba, Mexico and Uruguay, in Canberra (Australia)
- [Australian Centre for Latin American Studies](#)
- [ANU Centre for Mental Health Research](#)
- [ANU Research School of Population Health](#)
- [VheP](#)
- [SURCLA](#)
- [The University of Notre Dame Australia](#)
- [UNSW](#)
- [Plataforma SOM Salud Mental 360](#)
- [Australian Studies Centre - Universidad ORT Uruguay](#)
- [Argentine Chamber of Commerce - Australia](#)
- [Australian Academy of Science](#)

# Thank you – stay in touch



[noel.campbell@anu.edu.au](mailto:noel.campbell@anu.edu.au)

<https://politicsir.cass.anu.edu.au/centres/anclas>



[luis.salvador-carulla@anu.edu.au](mailto:luis.salvador-carulla@anu.edu.au)

<https://rsph.anu.edu.au/cmhr>



We invite you to complete our brief  
evaluation questionnaire at the end of  
this session