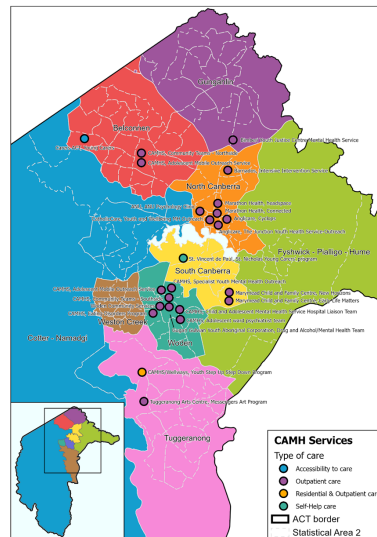


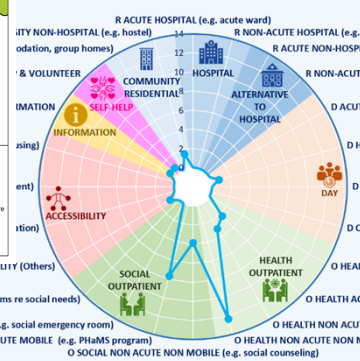


# 2020 Integrated Atlas of Youth Mental Health Care in the Australian Capital Territory

Release for Consultation  
Mary Anne Furst

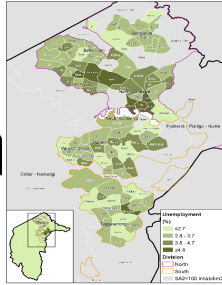


MENTAL HEALTH PATTERN OF CARE FOR CHILDREN AND ADOLESCENTS IN ACT  
Availability of MTCs per 100,000 residents (<25 years old)

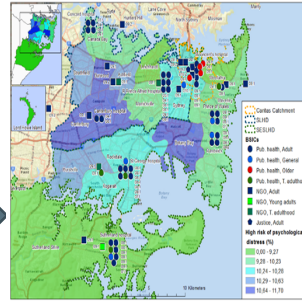




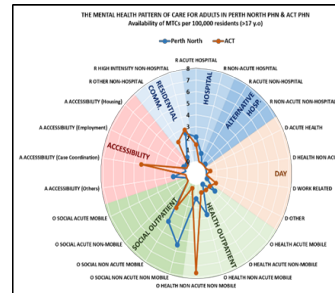
Socio-demographic and socio-economic characteristics identified and mapped



Alpha version  
Data gathering & coding



Services identified, interviewed and classified according to Main Type of Care



Beta version  
Present data to planners,  
check & adjust



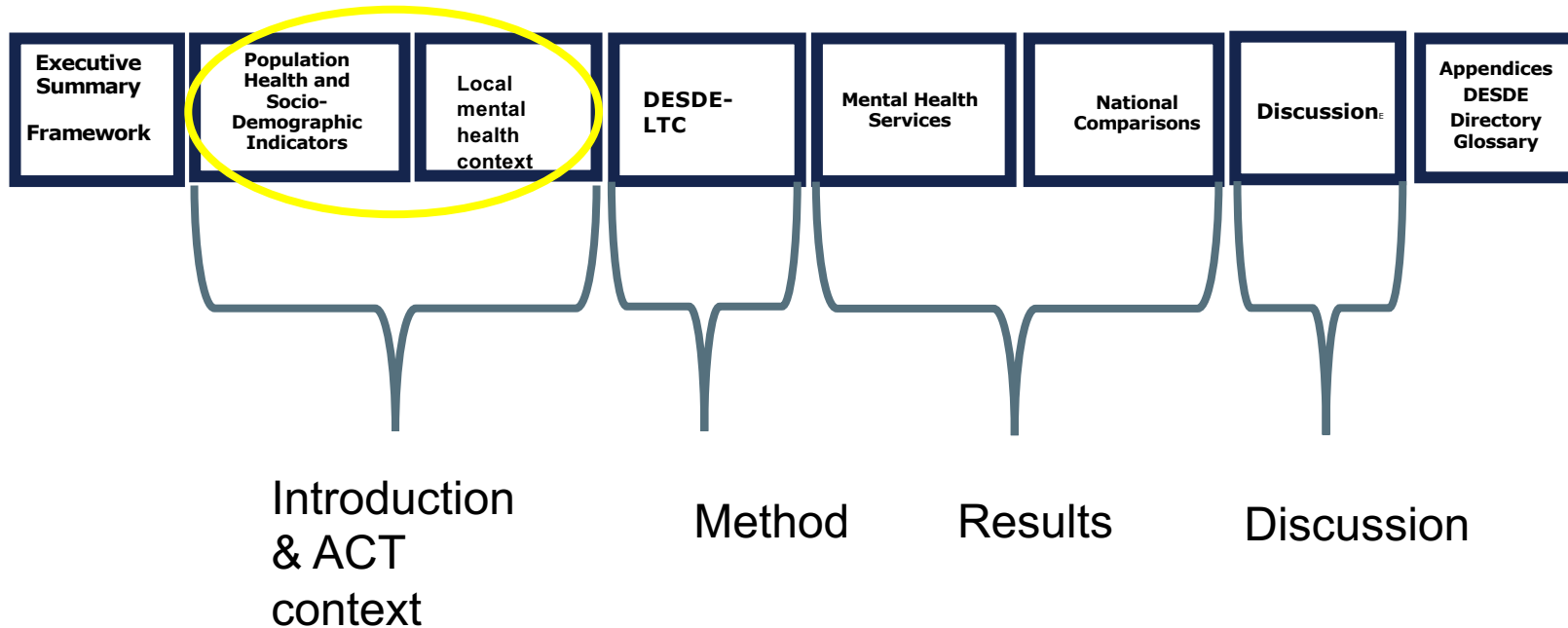
Version for Comment  
To stakeholders for  
comment, review

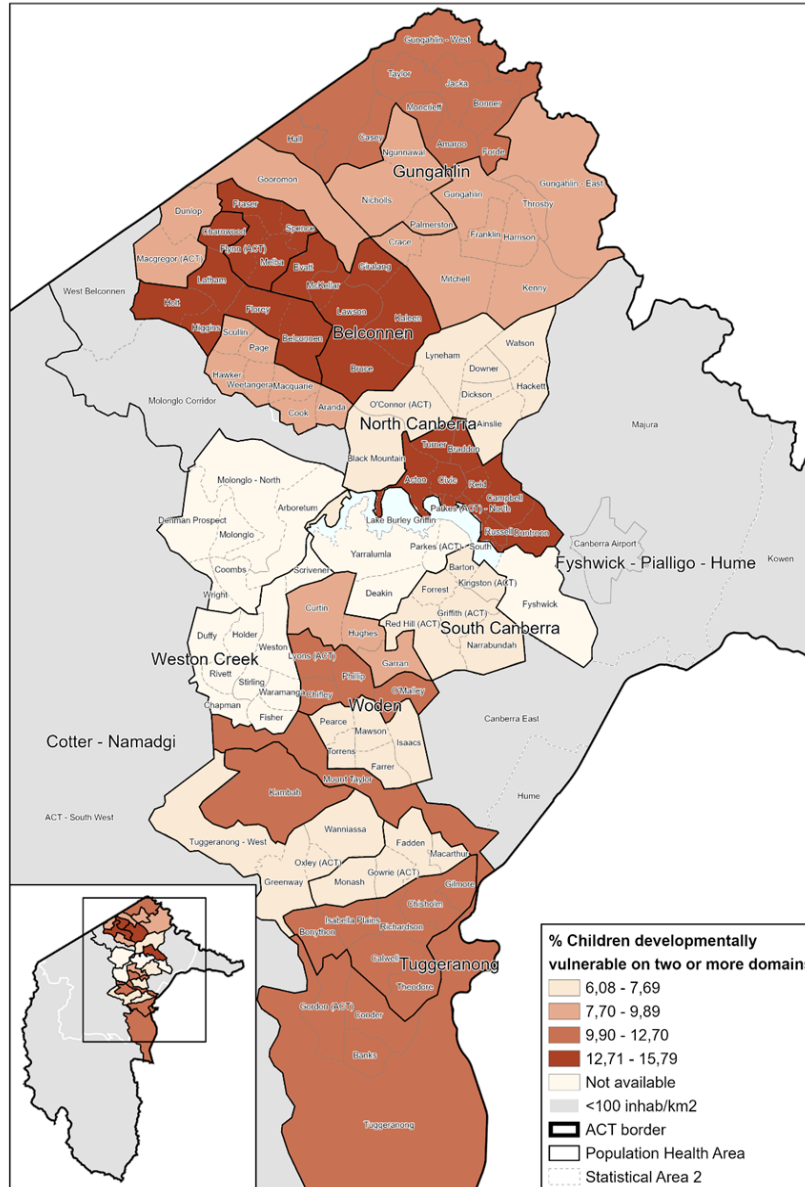


Final Version



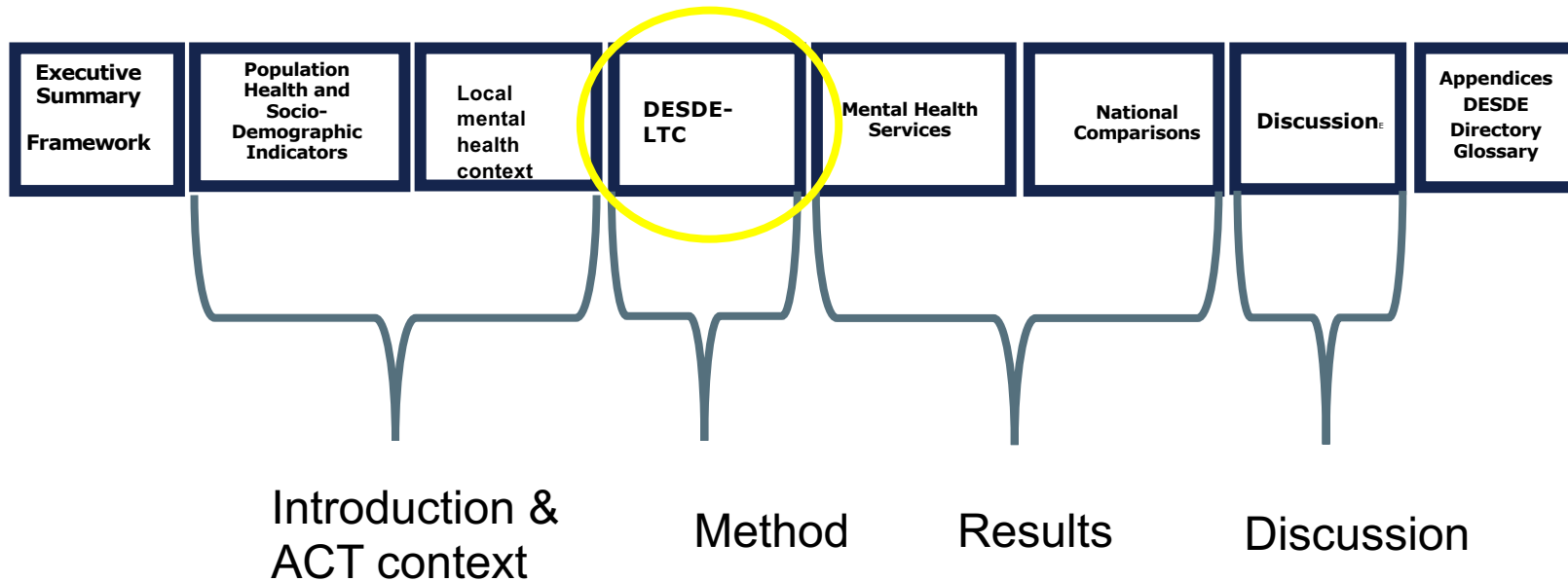
# Structure of an Atlas

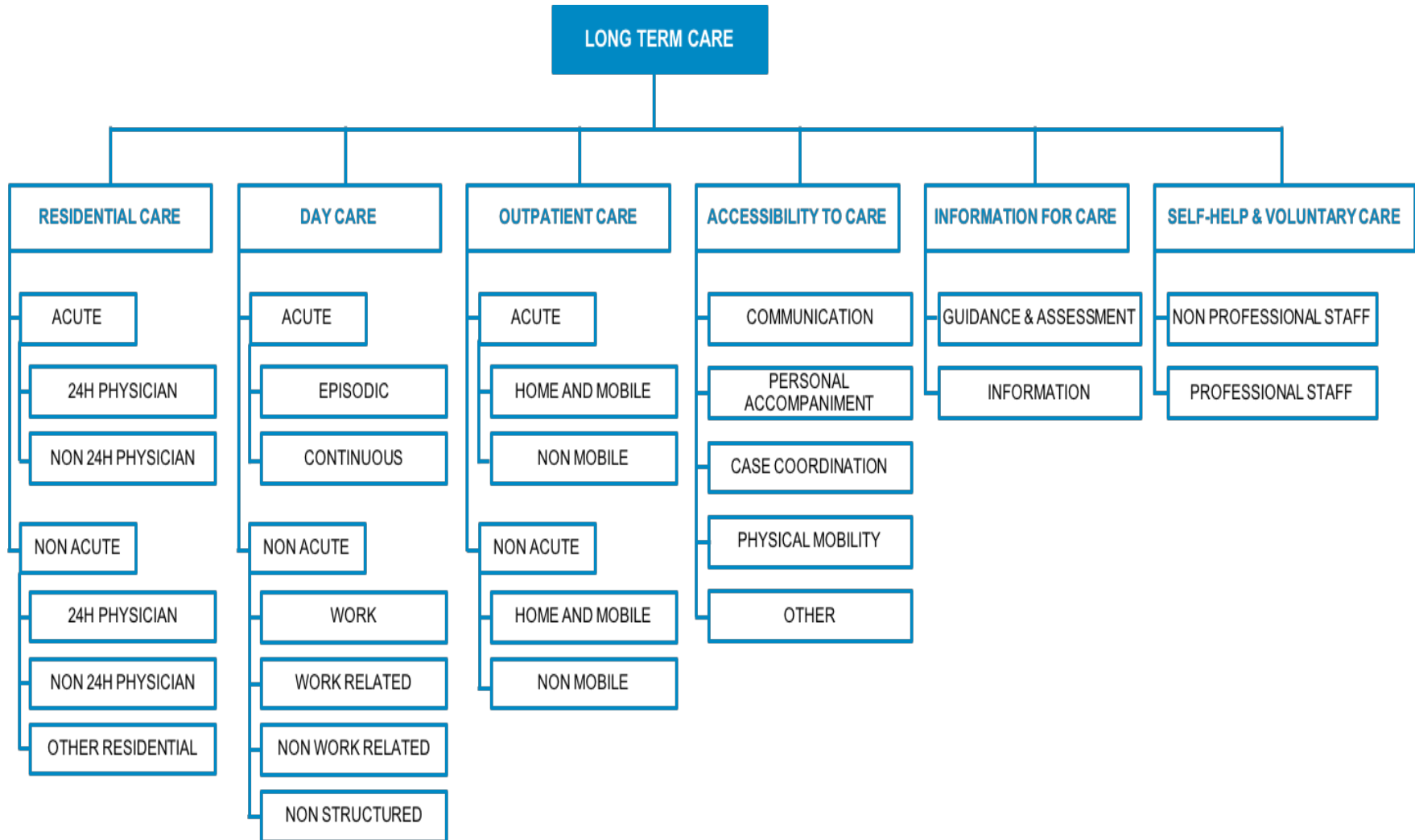


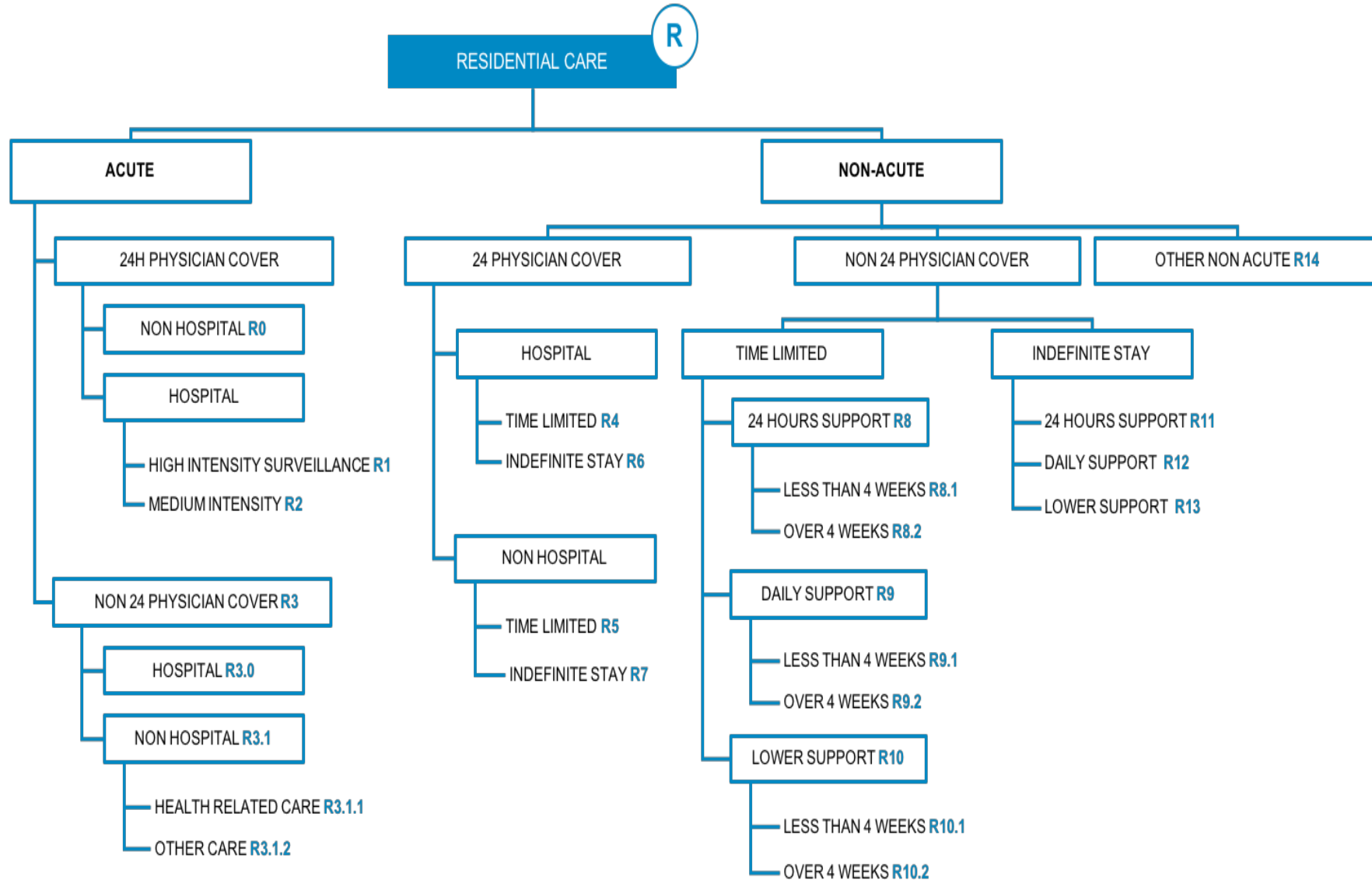




# Structure of an Atlas







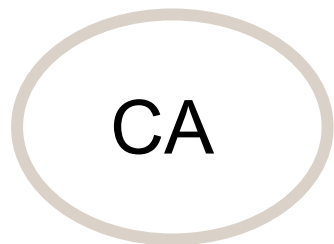


Provider	Name	Main DESDE Code	Other DESDE code(s)	Beds	FTE	Town / Suburb	Area of Coverage
CAMHS/CatholicCare	STEPS	CA[F00-F99]-R8.2 v		5	6.5	-	ACT
CAMHS/Wellways	Youth Step Up Step Down Program	AY[F00-F99]-R8.2	AY[F00-F99]-O5.2	6	6.8	-	ACT





# CA[F0—F99]-R8.2v



CA

Target population-Age code

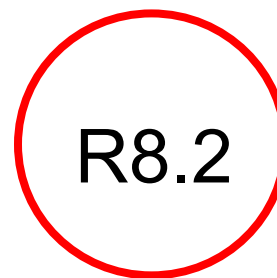
*CA: adolescents aged 12-17*



F00-F99

Target population-Diagnostic group

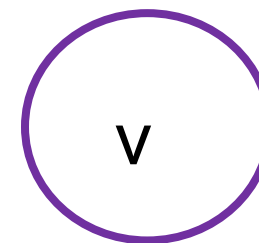
*F00-F99: Mental health general or unspecified*



R8.2

Main Type of Care-DESDE code

*R8.2: Residential care, non-acute, 24h hour cover, time limited (over 4 weeks)*



v

Qualifier: variable



Provider	Name	Main DESDE Code	Other DESDE code(s)	Beds	FTE	Town / Suburb	Area of Coverage
CAMHS/CatholicCare	STEPS	CA[F00-F99]-R8.2 v		5	6.5	-	ACT
CAMHS/Wellways	Youth Step Up Step Down Program	AY[F00-F99]-R8.2	AY[F00-F99]-O5.2	6	6.8	-	ACT

**CA:** Only adolescents (eg 12-17 years)

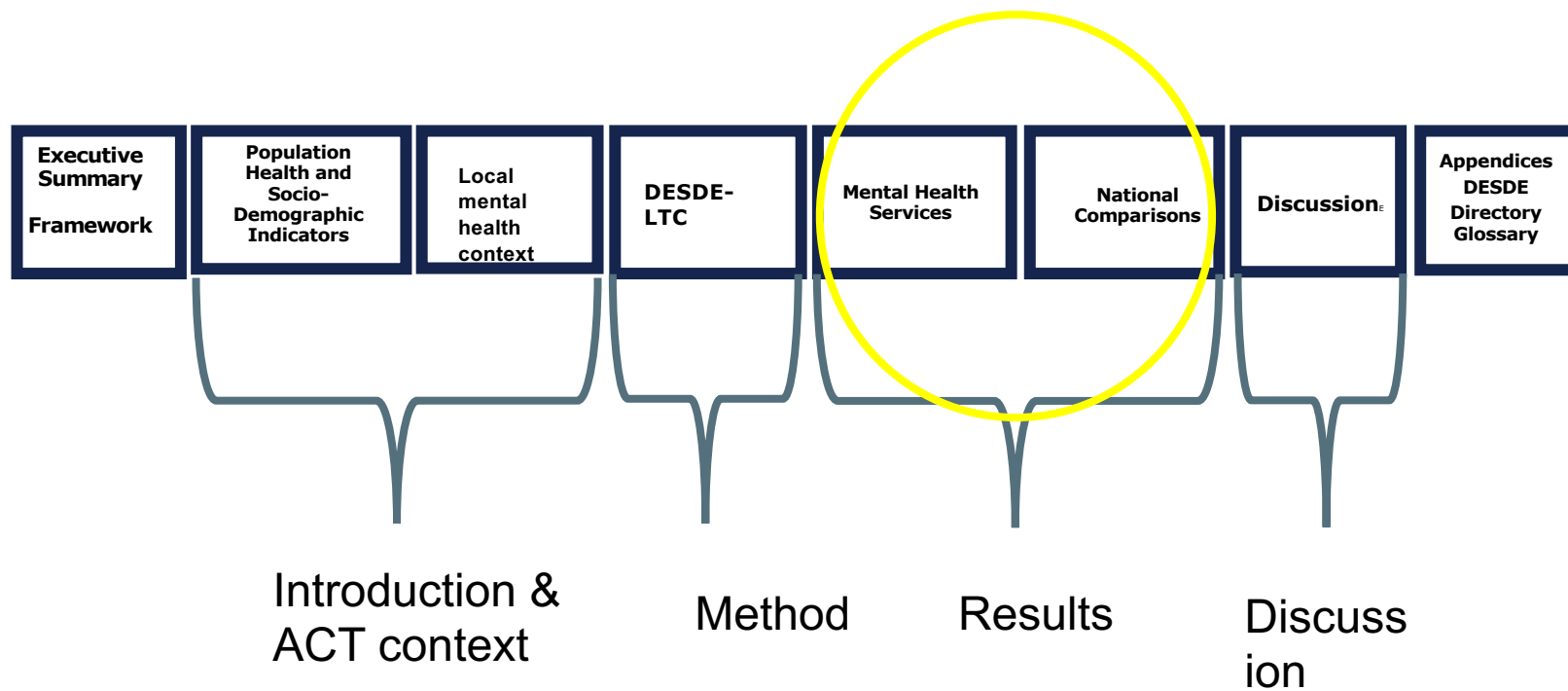
**[F00-F99]**-mental health-general, unspecified

**R8.2** Residential non-acute service, 24 hour support (not 24 hour physician cover)  
Time limited (over 4 weeks)

**v**

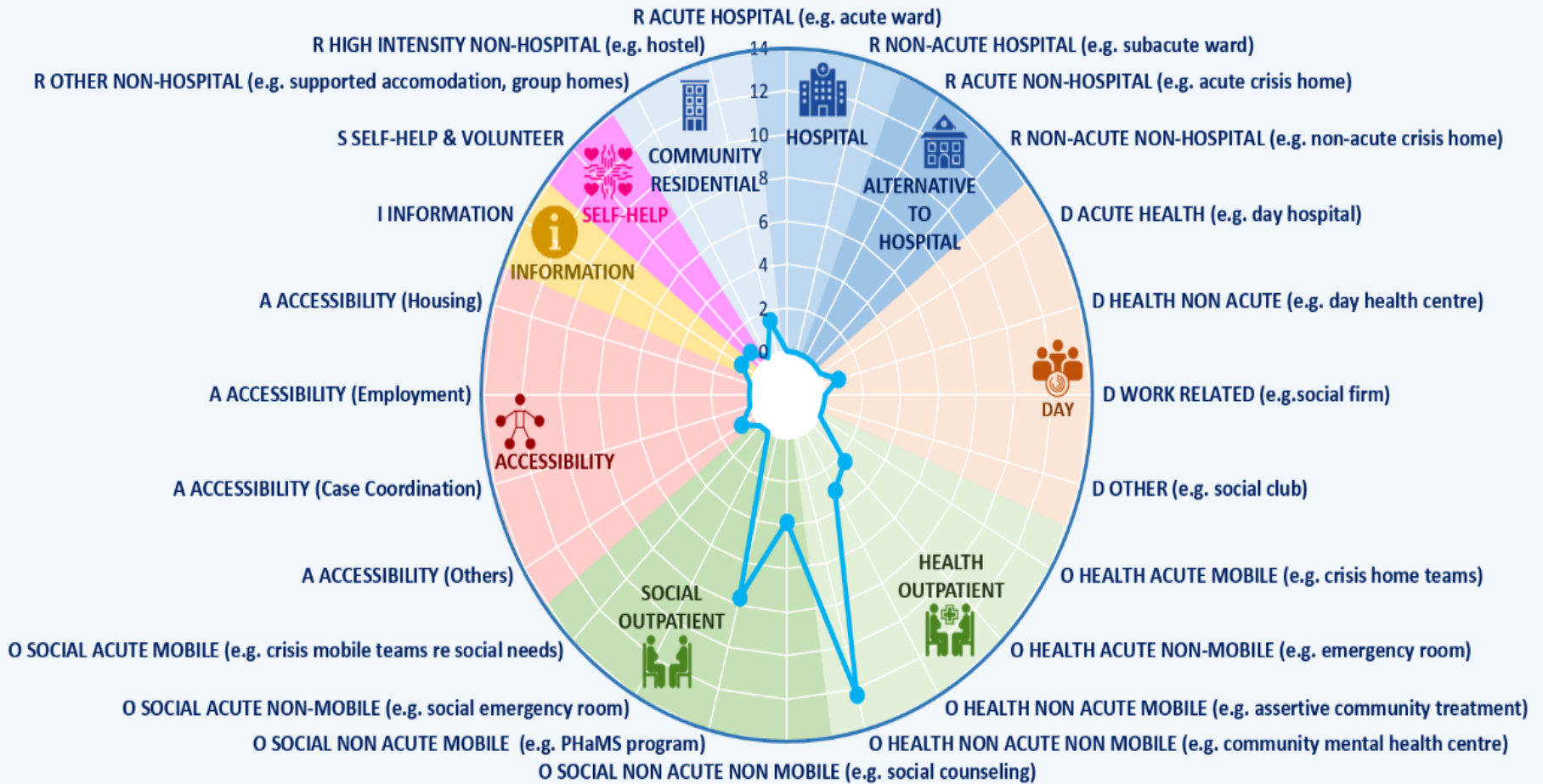


# Structure of an Atlas



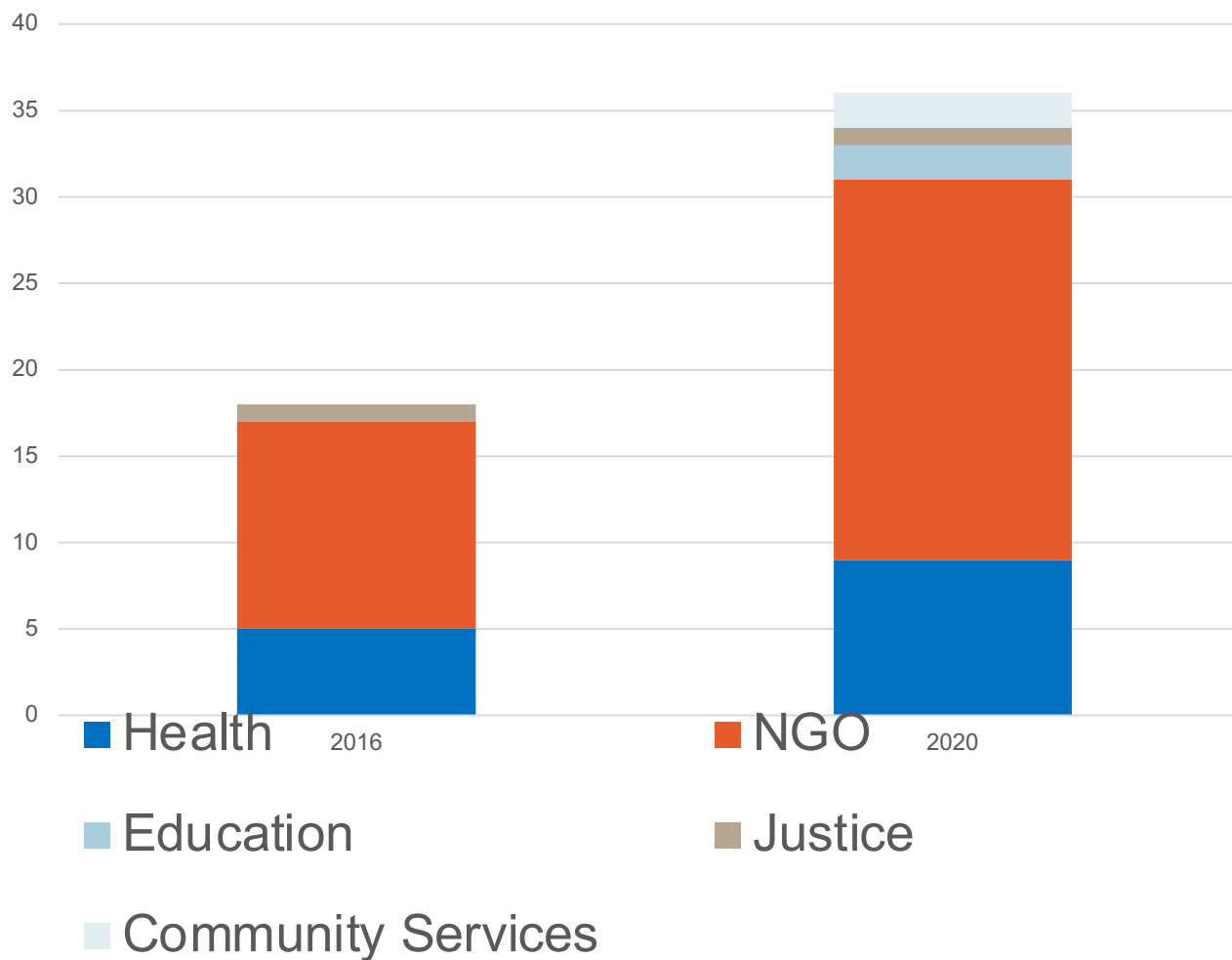


THE MENTAL HEALTH PATTERN OF CARE FOR CHILDREN AND ADOLESCENTS IN ACT PHN  
Availability of MTCs per 100,000 residents (<25 years old)



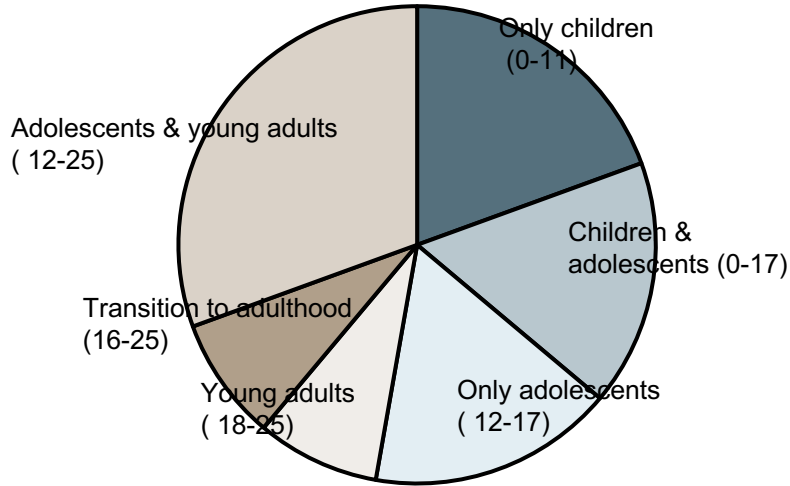


## Number and distribution of services by sector, <18 years ACT: 2016-2020

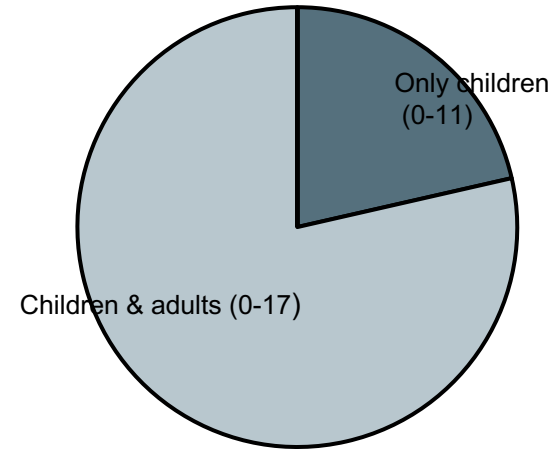




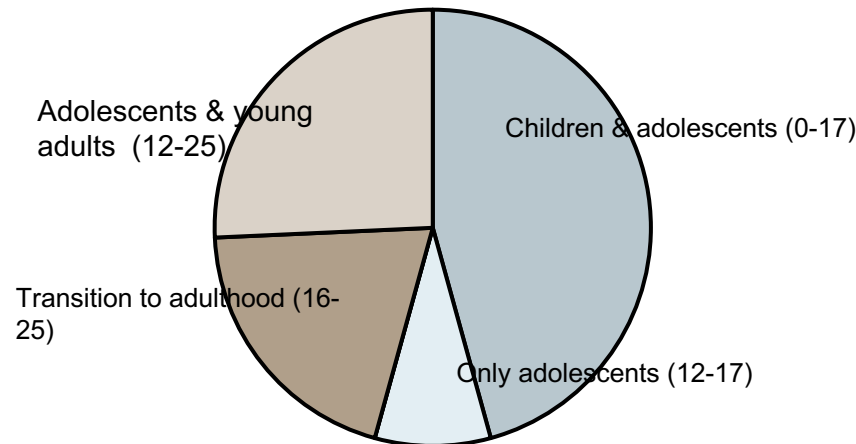
**ACT service distribution by target age group**



**North Sydney service distribution by target age group**

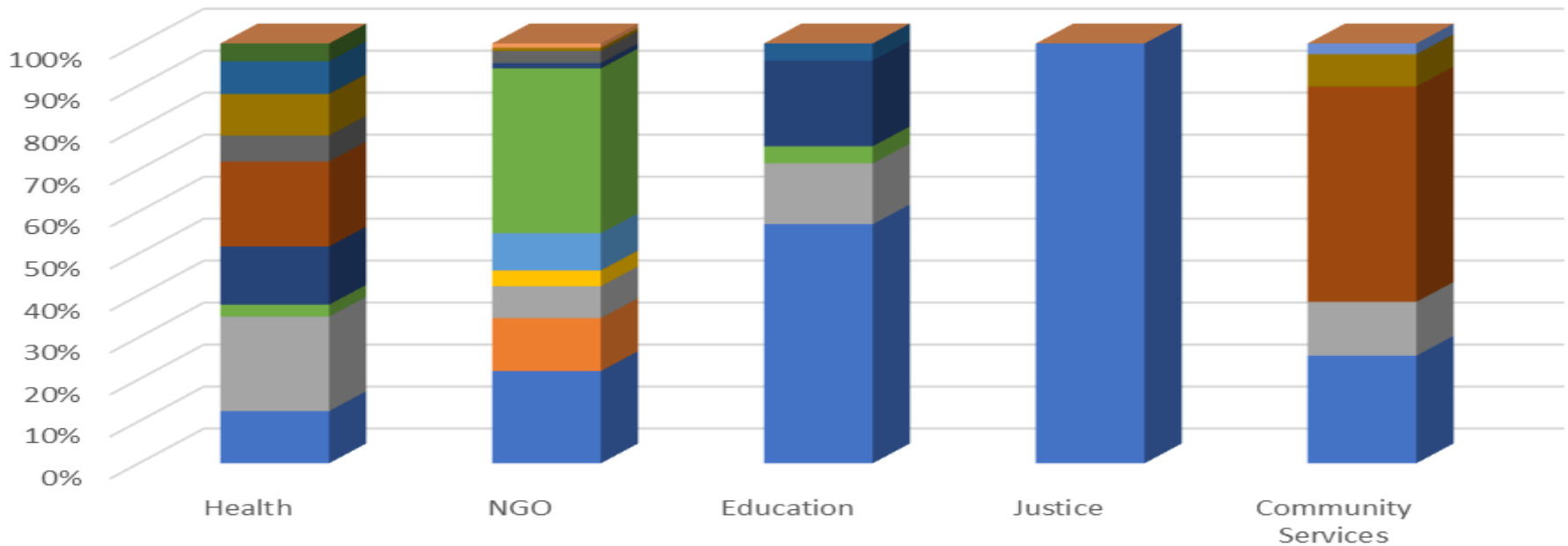


**Perth North service distribution by target age group**





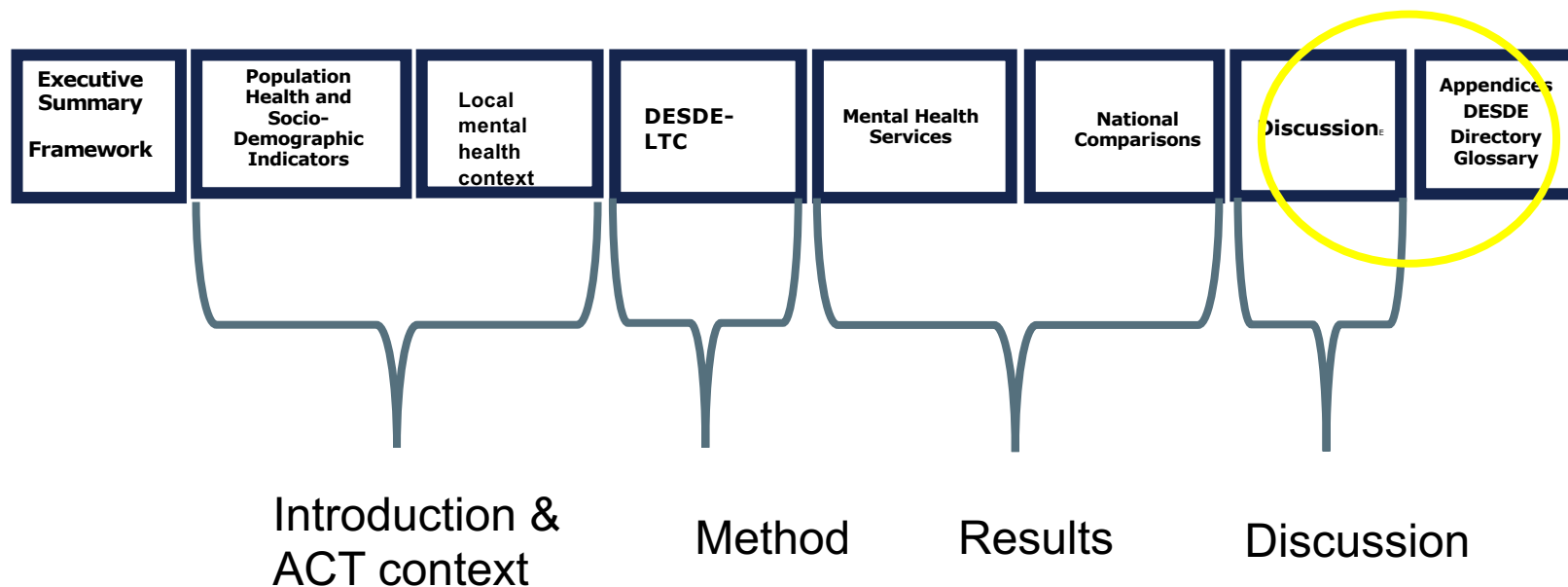
## Workforce distribution by sector



- Social and Emotional Wellbeing Worker
- Registrar
- Occupational therapist
- Allied health non specified
- Support worker/community worker/mental health worker
- Dual diagnosis/drug and alcohol worker worker
- Counselor
- Speech pathologist
- Psychiatrist
- Others
- Mental health nurse
- Case manager
- Social worker
- Psychologist



# Structure of an Atlas







# ATLAS

# All Services in the ACT



## Number of Care Teams

# 101

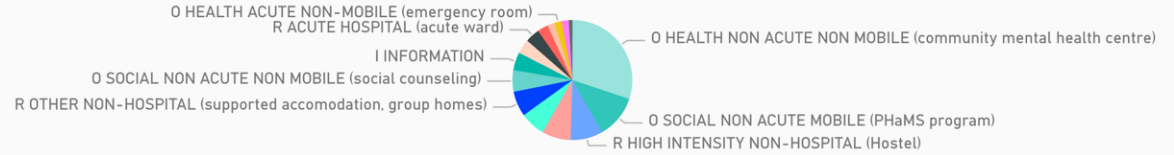


## Categories

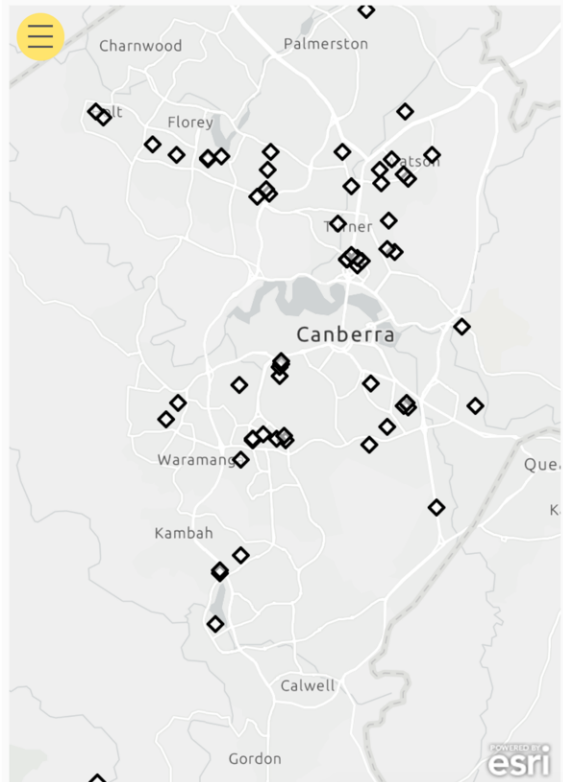
- General
- Child
- Child & adolescent
- Adolescent
- Adolescents and young adults
- Transition to adulthood
- Adult
- Older

Clear Filter

## Primary Service Type



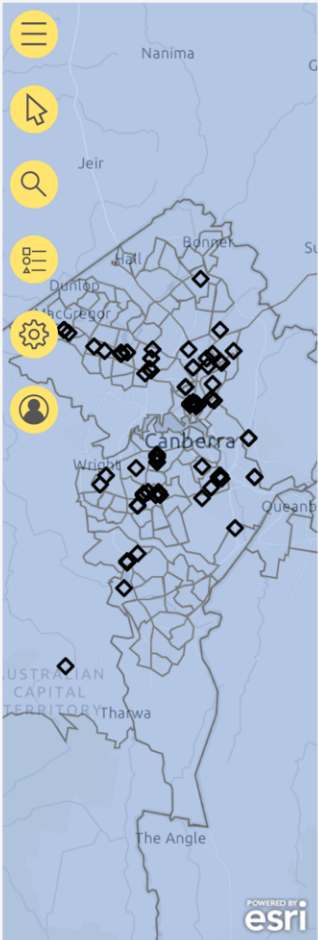
Name	Provider	Suburb	Catchment
2N-Adult MH Inpatient Services	Calvary Healthcare Mental Health Services-Calvary Hospital	Bruce	North Canberra, Belconnen and the Gungahlin precinct.
ACT Coronial Counselling Service	Relationships Australia ACT	Deakin	ACT
ACT Gambling Counselling & Support Service	Relationships Australia ACT	Deakin	ACT strictly only
ADACAS	The A.C.T. Disability, Aged and Carer Advocacy Service (ADACAS)	Watson	ACT
Adult Mental Health Unit (AMHU)-Low dependency beds	ACT Health- Mental Health, Justice Health, Alcohol and Drug Services- Adult Acute Mental Health Services	Garran	ACT
Advocacy Team	Carers ACT	Holt	ACT and Southern Highlands
Alexander Maconochie Centre Mental Health Services (AMC MHS)	ACT Health- Mental Health, Justice Health, Alcohol and Drug Services- Justice Health Services	Hume	ACT
Better Access and ATAPS Team	CatholicCare	Woden?	0
Bimberi Youth Justice Centre Mental Health Services (BMHS)	ACT Health- Mental Health, Justice Health, Alcohol and Drug Services- Justice Health Services	Kenny	ACT
Brian Hennessy Rehabilitation Centre (BHRC)	ACT Health- Mental Health, Justice Health, Alcohol and Drug Services- Rehabilitation and Specialty MHS	Bruce	ACT
Bungee	Belconnen Community Service	Belconnen?	ACT
Circles of Support	YWCA	Canberra City	ACT
Community Connections - ACT	Community Connections - ACT	Kambah	ACT
Community Mental Health Team - City	ACT Health- Mental Health, Justice Health, Alcohol and Drug Services- Adult Community Mental Health Services	Canberra	All suburbs of City catchment area



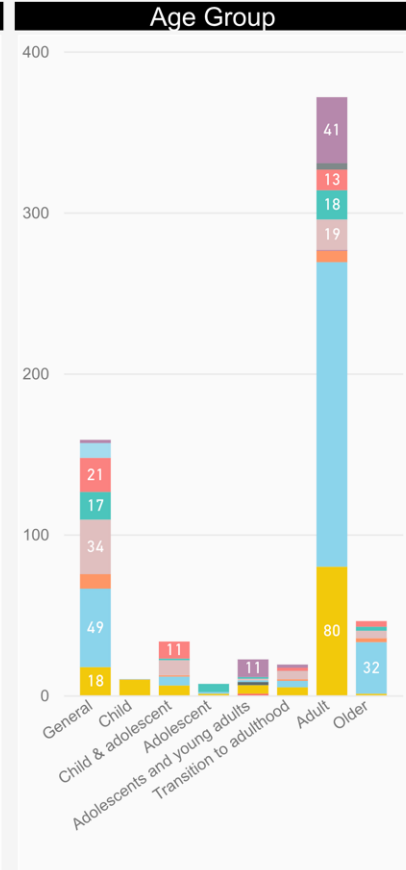
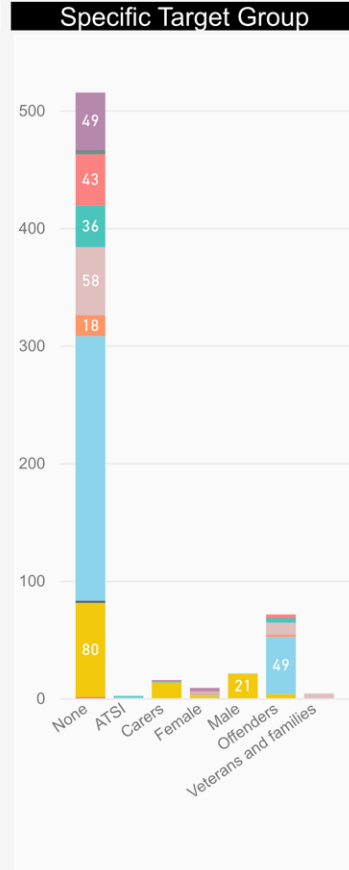
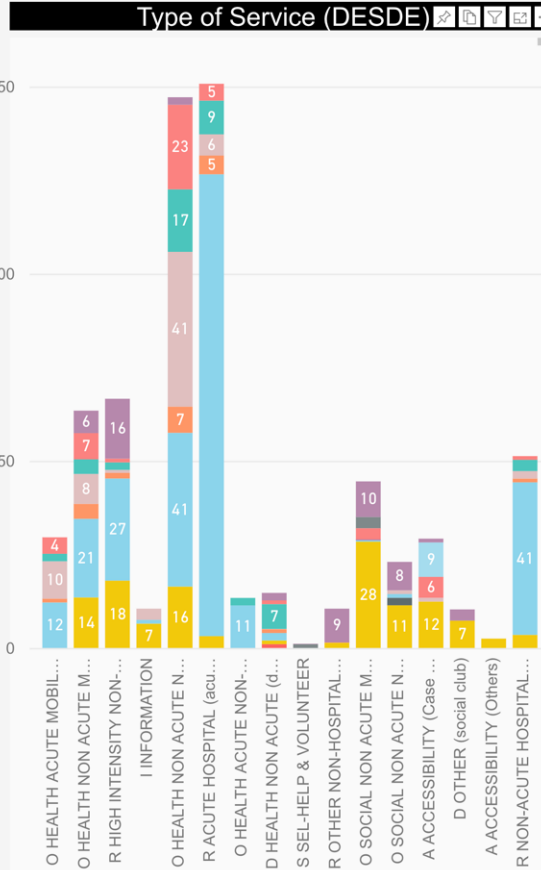


# ATLAS

# Workforce Status



- Legend**
- Aboriginal Worker
  - Clinical Case Manager
  - Educator
  - Other
  - GP
  - Nurse
  - Occupational Therapist
  - Peer Worker
  - Physiotherapist
  - Psychologist
  - Psychiatrist
  - Speech Therapist
  - Social Worker
  - Volunteer
  - Non-Clinical CM
  - Mental Health Worker
  - Support Facilitator
  - Support Worker



Clear Filters



Australian  
National  
University

webinar series  
frontiers in  
mental health



Office for Mental Health And Wellbeing

# Thank you

Comments to:

[Mary.Furst@anu.edu.au](mailto:Mary.Furst@anu.edu.au)

Link to Atlas project and previous atlases:

<https://rsph.anu.edu.au/research/projects/atlas-mental-health-care>

**Primary Investigator and Head of the Project:**

Professor Luis Salvador-Carulla, Australian National University

**Co-Investigators/co-authors:**

Ms. MaryAnne Furst (Project Co-ordinator), Australian National University

Dr. Jose-A.Salinas-Perez (Geographical Information Systems), Universidad Loyola Andalucía Spain

Dr. Nasser Bagheri, Australian National University

Dr. Denise Riordan, ACT Health Directorate