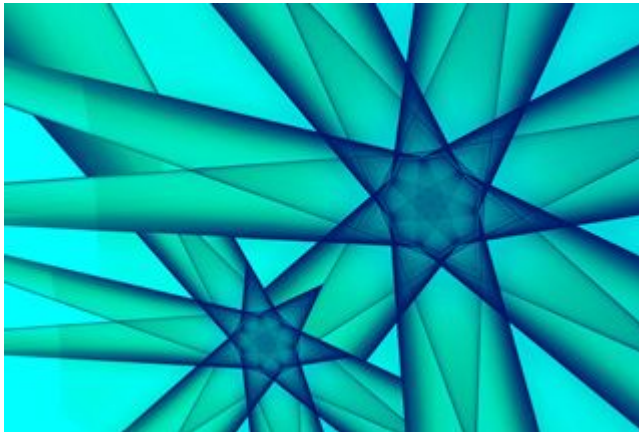




October 2013



## Workshops: Implementation research to strengthen primary health care

APHCRI, in collaboration with its strategic partners, is organising two international workshops that focus on international collaboration and networking of research initiatives to support translation of evidence to policy and practice change in primary health care.

**Pre-NAPCRG Conference workshop, Canada**  
**9 November 2013, 9am–5pm** » [read more](#)

**APHCRI Masterclass, New Zealand**  
**4 December 2013, 2–5pm** » [read more](#)

## News

### International partnership to optimise primary health care access for vulnerable socioeconomic groups

APHCRI and the Canadian Institutes of Health Research (CIHR) will contribute \$2.5m each to an Australian Canadian Joint Centre of Research Excellence that will focus on chronic disease prevention and management, and improved access to appropriate care for vulnerable populations. » [read more](#)

### The relationship between sub-acute care & primary health care

APHCRI is funding five research projects under its new research stream: **the relationship between sub-acute care and primary health care**.

The first workshop of the stream is on 12 December 2013. The workshop will be open to policy makers, researchers, consumers and representatives of non-government organisations. » [read more](#)

## Funding available

### Institutional Research Capacity Building Program

APHCRI is inviting Expressions of Interest from relevant institutions to develop additional research capacity in primary health care research.

Funding will be provided to subsidise six post-doctoral positions (one per Medical School) up to the value of \$83,000 each for the duration of the

## Announcement

Congratulations to Dr Amanda Louise Brownlow for receiving the 2013 APCHRI/Robert Graham Center Visiting Fellowship.

Dr Amanda is visiting the Robert Graham Center, Washington DC in October 2013 to undertake a study on 'how can telehealth strengthen primary health care?' She will also attend the 41 North American Primary Care Research Group (NAPCRG) Conference in Ottawa, Canada as part of the program.

Dr Amanda will present her research findings in March 2014. » [read more](#)



Follow [@aphcriANU](#)

funding scheme (2014-2016). **Closes by** Friday 13 December 2013, 5.00pm (Australian Eastern Time) » [read more](#)

## Events

### GRAPHIC Reference Group meeting, mini-conference & workshop

The National Centre for Geographic & Resources Analysis in Primary Health Care (GRAPHIC), established within APHCRI, is hosting its National Reference Group meeting and a mini-conference to demonstrate their newest tools on **7 November 2013 in Canberra**.

A half day workshop on **8 November 2013** is also organised for researchers who want to practice using the GRAPHIC tools and learn how to access and use the range of data available, and also learn how their own data can be integrated with the GRAPHIC data and mapped or analysed.

### Public lecture

#### **No magic bullets: lessons on integrated care from the English National Health Service**

**Dr Rebecca Rosen**, Senior Fellow, Nuffield Trust & GP Vice Chair for Greenwich Clinical Commissioning Group

**Date:** Wednesday 27 November 2013

**Time:** 5 – 6pm (followed by light refreshments)

**Venue:** Acton Theatre, Crawford School of Economics and Government, Lennox Crossing, ANU (Grid reference A2 on the [campus map](#))

**This lecture is free and open to the public.**

**RSVP:** email [faiza.cheema@anu.edu.au](mailto:faiza.cheema@anu.edu.au) or call 6125 0766.

## Lecture recordings

### [Forming alliances to ensure better outcomes for patients with multi-morbidity](#)

**Professor Martin Fortin**, Director of Research, Department of Family Medicine, Université de Sherbrooke (Quebec), Director of Academic Research, Centre de santé et de services sociaux de Chicoutimi, Canada

### [Clinical & community initiatives for obesity prevention & control](#)

**Dr William Dietz** Former Director of the Division of Nutrition, Physical Activity, & Obesity in the Center for Chronic Disease Prevention & Health Promotion

[First Nation-managed healthcare organisations: opportunities, challenges & trends](#)

**Associate Professor Josée Lavoie**, University of Northern British Columbia

Visit APHCRI's website for more lecture recordings on primary health care topics. » [read more](#)

---

The Australian National University, Canberra | CRICOS Provider : 00120C | ABN : 52 234 063 906

---

If you do not wish to receive future emails from us, please [unsubscribe](#).